

# FUKUDA

福田交易株式會社

Company Profile 2025



# History



1950-The company resumed operations as, R. Fukuda & Company Ltd., Imports of bearings and cutting tools became an important area of its business activities.

1950' s

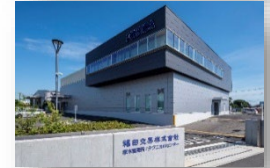


We stopped handling automobile parts in 1977. At that time, import parts business increased to 86%.

1970' s

Atsugi and Kyushu branch offices opened. The company was renamed Fukuda Corporation. Our Business shifted from MRO to OEM.

1990' s



Atsugi Branch Office and Atsugi Factory moved to Ebina. Atsugi Factory renamed as Technical Center. We celebrated our 70<sup>th</sup> Anniversary in 2019.

2010' s

1940' s

1940-Rakuo Fukuda (1904-1981) founded his trading company in Tokyo. The Company specialized in imports of bearings, machine tools, automobile and aircraft parts. We closed our company in 1941, due to World War II.

1960' s

Nagoya and Osaka branch offices opened to increase precision bearings for machine tool, electrical machinery parts and automobile parts. At that time, industrial import parts made up 44% of our sales, while automobile parts were 56% of our sales.

1980' s

Hiroshima and Hokuriku branch offices opened. Inventory control center was established in Urayasu. Atsugi factory was opened to manufacture precision lock nuts. Engineering department established to start technical services.

2000' s

Inventory control center moved to Chiba. ISO 9001 and ISO 14001 acquired.



# Business Concept

**We are an import Firm specializing  
in machine Technology**

**Superior Products from All Parts of the World**

We are introducing and offering to the Japanese machine industry unique and exceptional accessory parts and equipment for machinery - produced in Europe and North America.



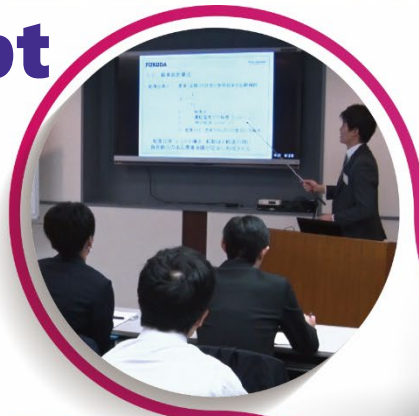
Source:WZL



# Business Concept

**FUKUDA**  
よりよいものを世界から

Training School  
for Design Engineers



Consulting  
Specialists



Diagnosing •  
Testing •  
Troubleshooting



**Technical Service**  
We offer more than just  
products...

Technical Seminars  
& Presentations



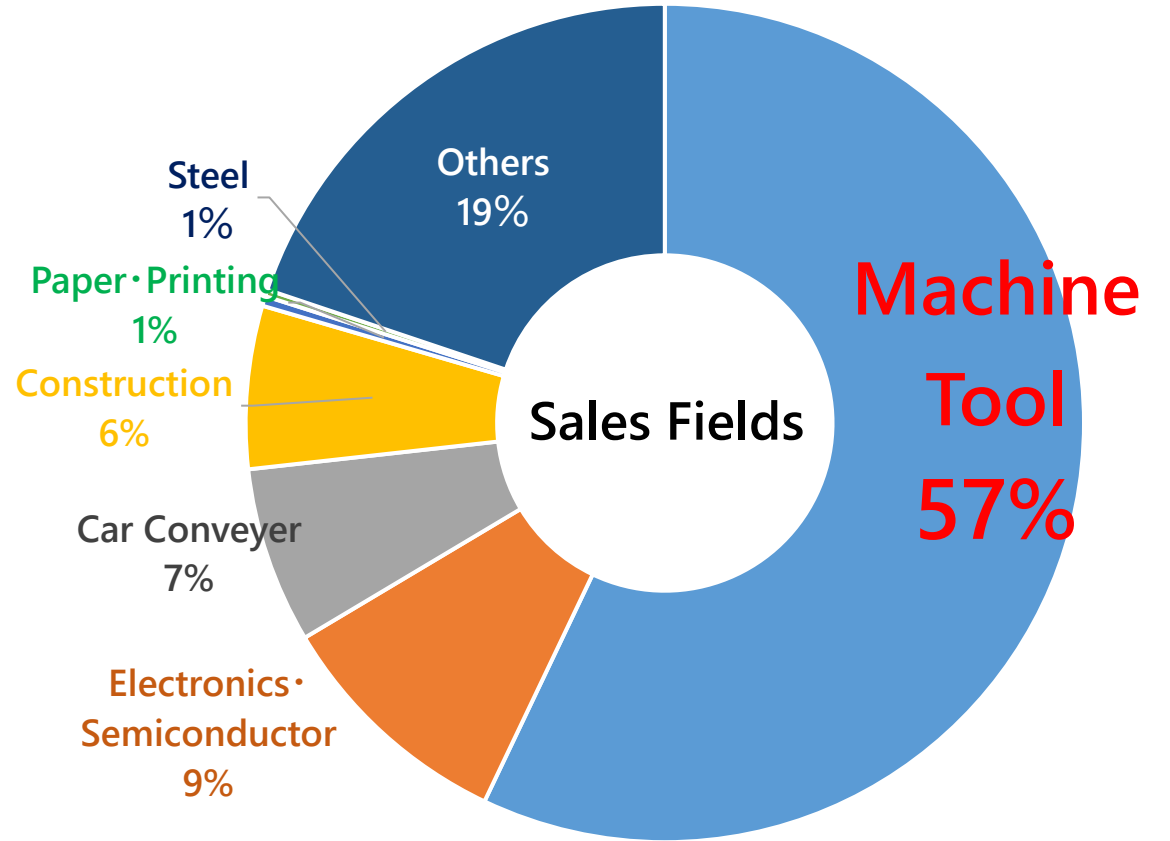
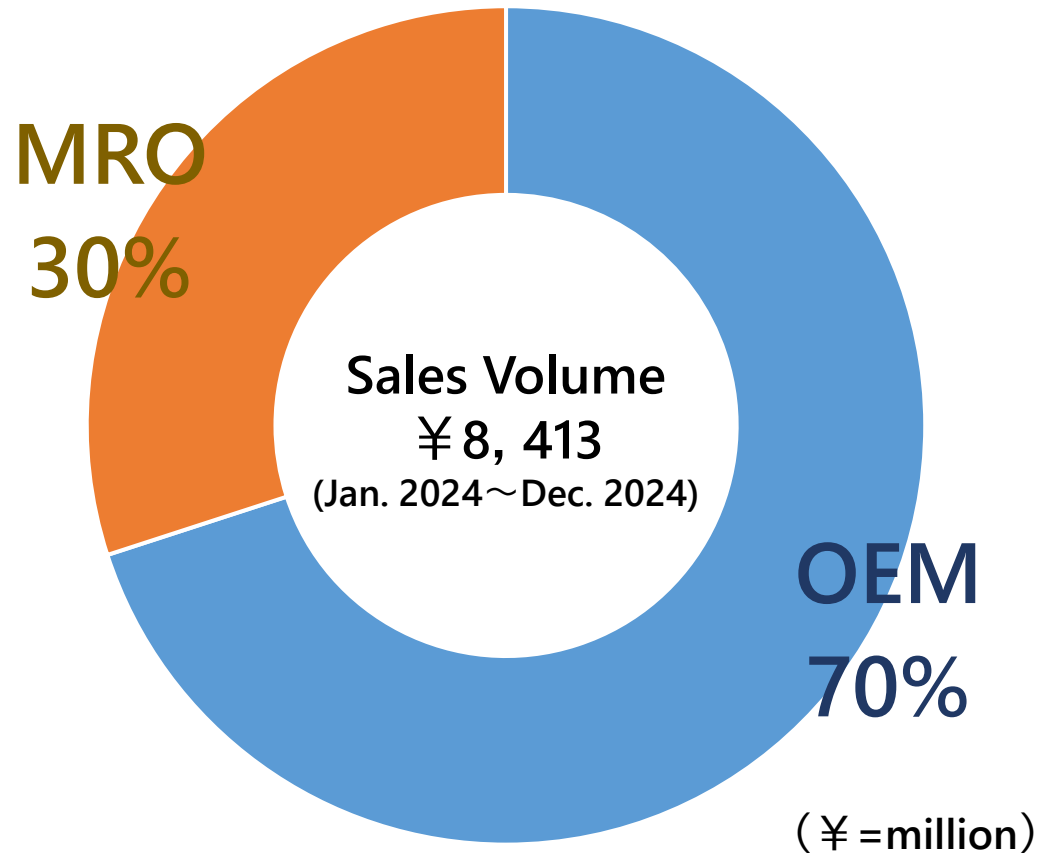
Technical Center  
Production & Repair  
of Machine  
Tool Spindles



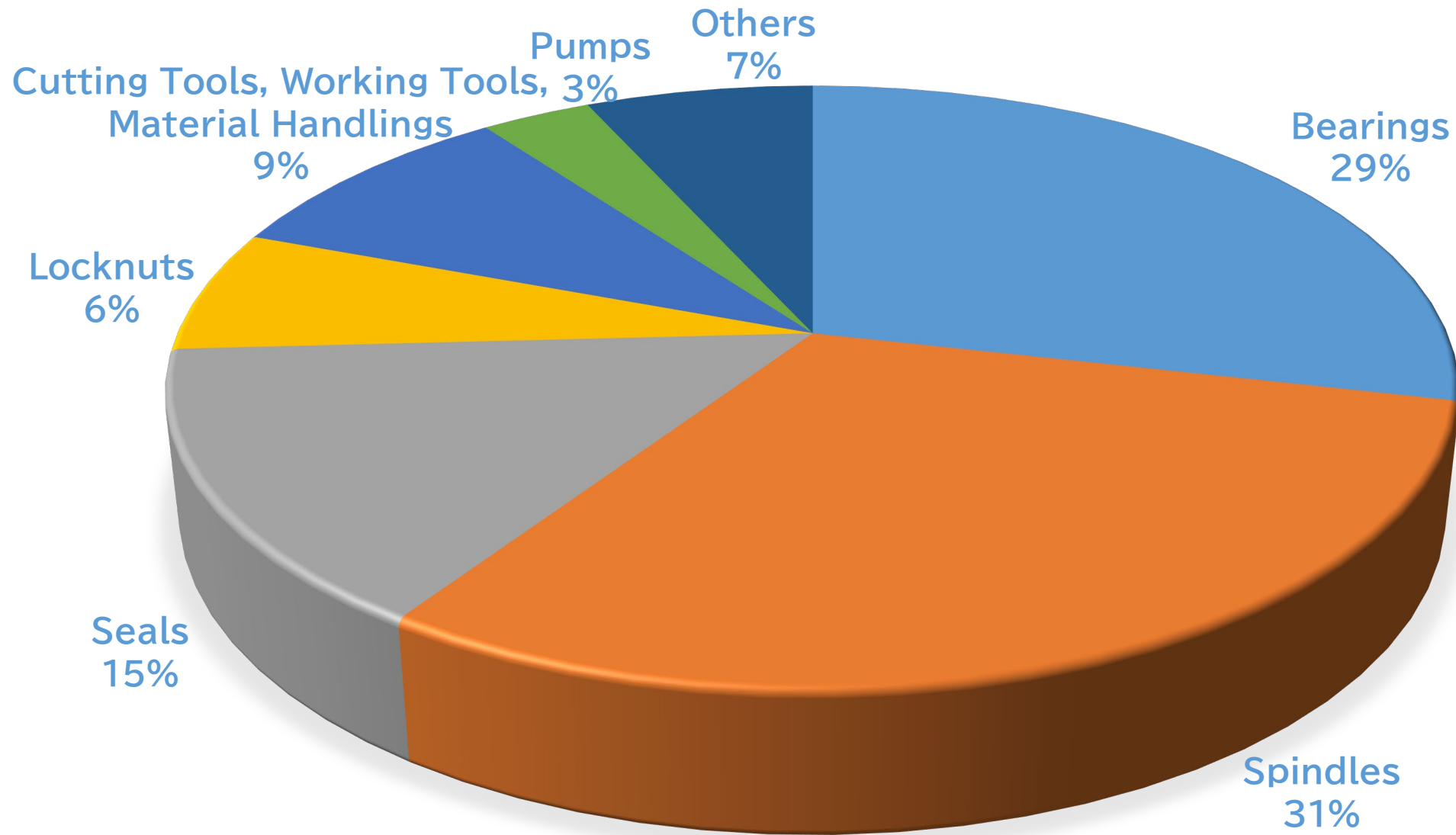
Providing Technical  
Data and Information



# FUKUDA's Business Fields



# Sales Breakdown

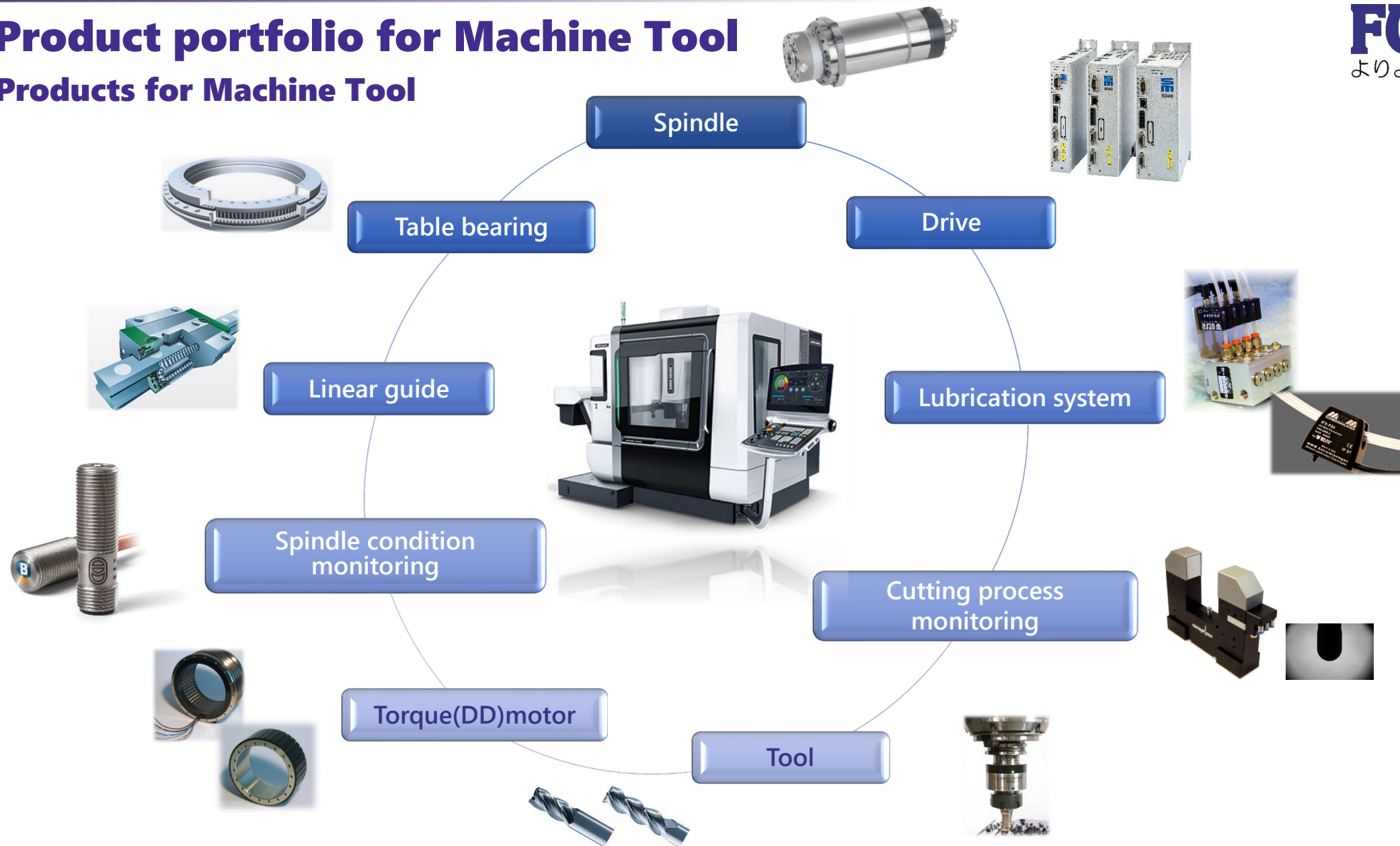




# Product portfolio for Machine Tool

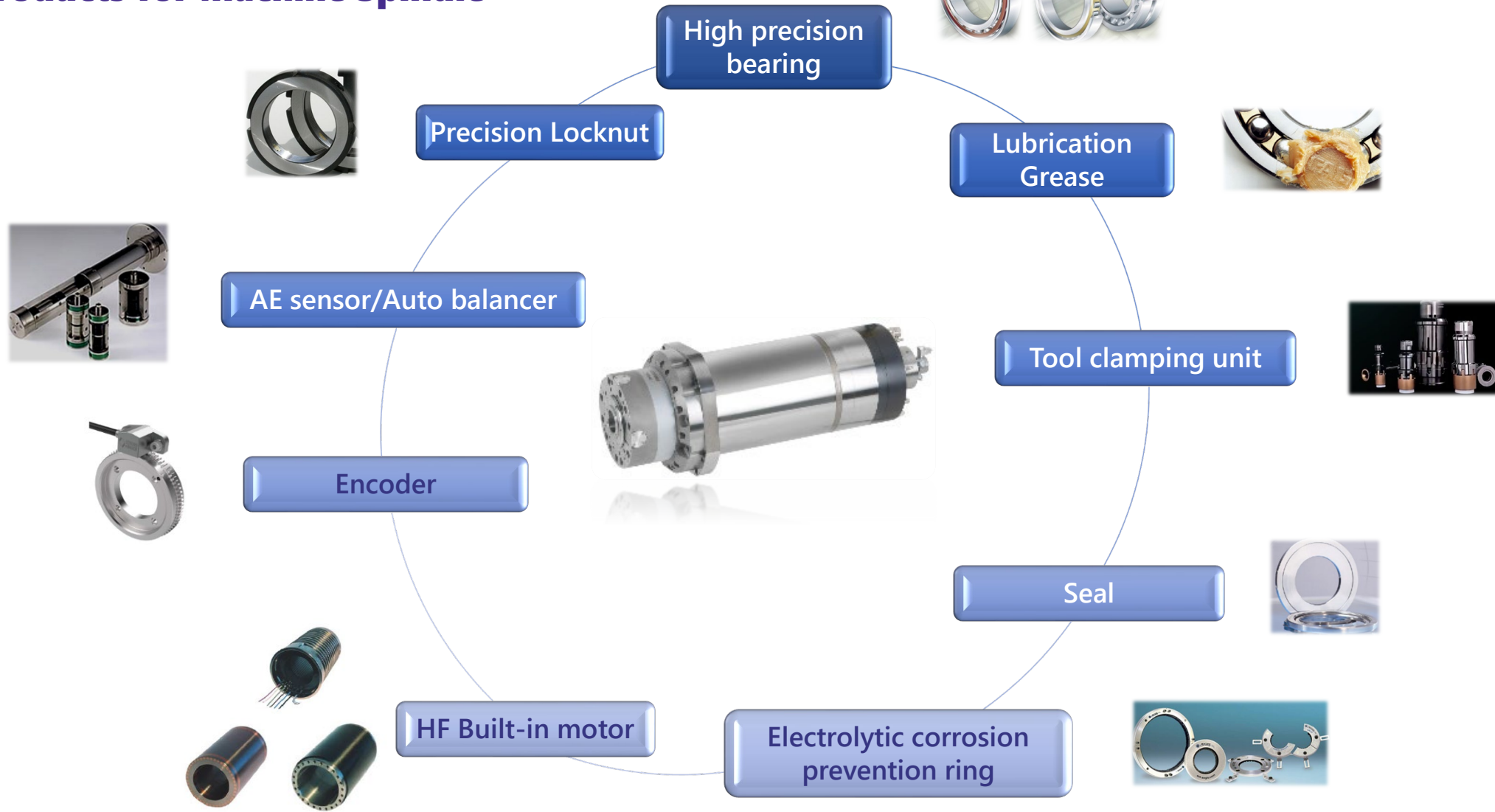
## Products for Machine Tool

**FUKUDA**  
よりよいものを世界から



# Product portfolio for Machine Tool

## Products for Machine Spindle

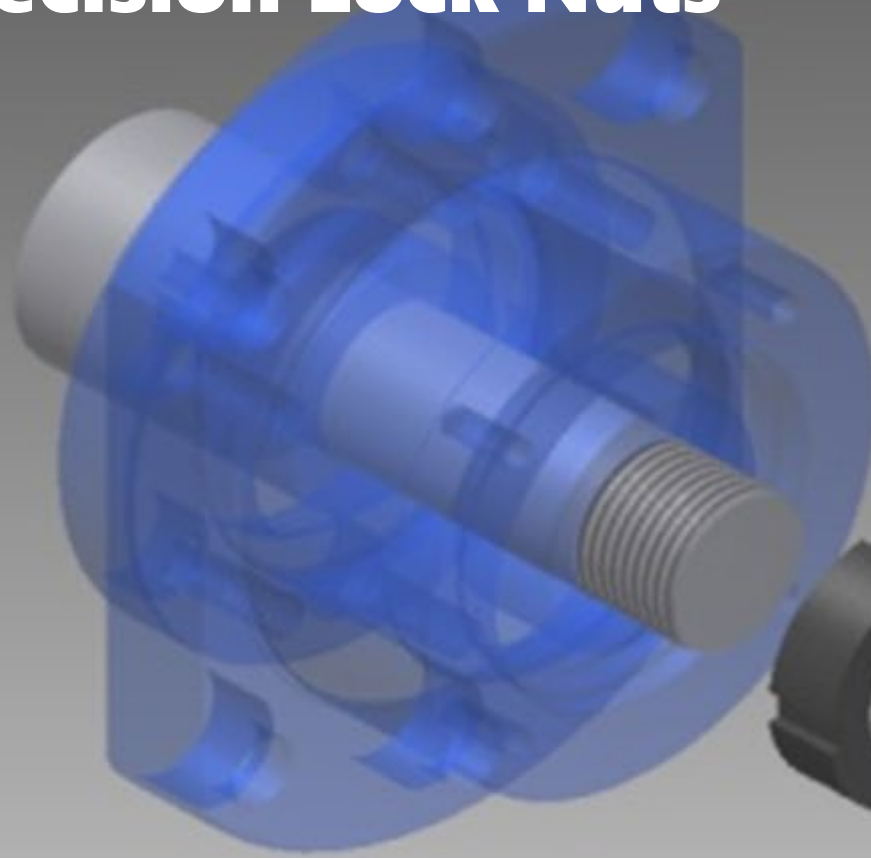




# Main Customers

AISIN Corporation	JFE Steel Corporation	NACHI-FUJIKOSHI CORP.	TAIYO KOKI Co., Ltd.
Amada Co., Ltd.	JTEKT CORPORATION	Nagase Integrex Co., Ltd.	THK Co., Ltd.
BRIDGESTONE CORPORATION	Kashiyama Industries, Ltd.	NIDEC MACHINE TOOL CORPORATION	TMEIC Corporation
CITIZEN MACHINERY CO., LTD.	Kawasaki Heavy Industries, Ltd.	NIDEC OKK CORPORATIOIN	TOKYO SEIMITSU CO., LTD.
DENSO CORPORATION	KUBOTA Corporation	NIKON CORPORATION	TOYO ADVANCED TECHNOLOGIES Co., LTD.
DMG MORI CO., LTD.	Kobe Steel, Ltd.	NISSAN MOTOR CO., LTD.	TOYO KANETSU K.K.
EBARA CORPORATION	Komatsu NTC Ltd.	Okuma Co., Ltd.	TOYOTA MOTOR CORPORATION
FANUC LTD	MAKINO MILLING MACHINE CO., LTD.	Okamoto Machine Tool Works, Ltd.	TSUDAKOMA Corp.
FUJI CORPORATION	Mazda Motors Corporation	ROKU-ROKU SMART TECHNOLOGY CO., LTD.	TSUGAMI CORPORATION
Hitachi, Ltd.	MICRON MACHINERY CO., LTD.	SCREEN Holding Co., Ltd.	Union Tool Co.
HONDA MOTOR CO., LTD.	MITSUI SEIKI KOGYO CO., LTD.	SHIBAURA MACHINE CO., LTD.	WAIDA MFG. CO., LTD.
HORKOS CORP	Mitsubishi Motors Corporation	SHIMADZU PRECISION TECHNOLOGY, Ltd.	YAMAZAKI MAZAK CORPORATION
IHI Corporation	MITSUBISHI HEAVY INDUSTRIES, LTD.	Shin Nippon Koki Co., Ltd.	YASDA PRECISION TOOLS K.K.
ISUZU Motors LIMITED	Mitsubishi Electric Corporation	SUBARU CORPORATION	Yanmar Co., Ltd.
JAXA	MITSUBISHI MATERIALS CORPORATION	Sumitomo Heavy Industries, Ltd.	Zeon Corporation

# FKD Precision Lock Nuts



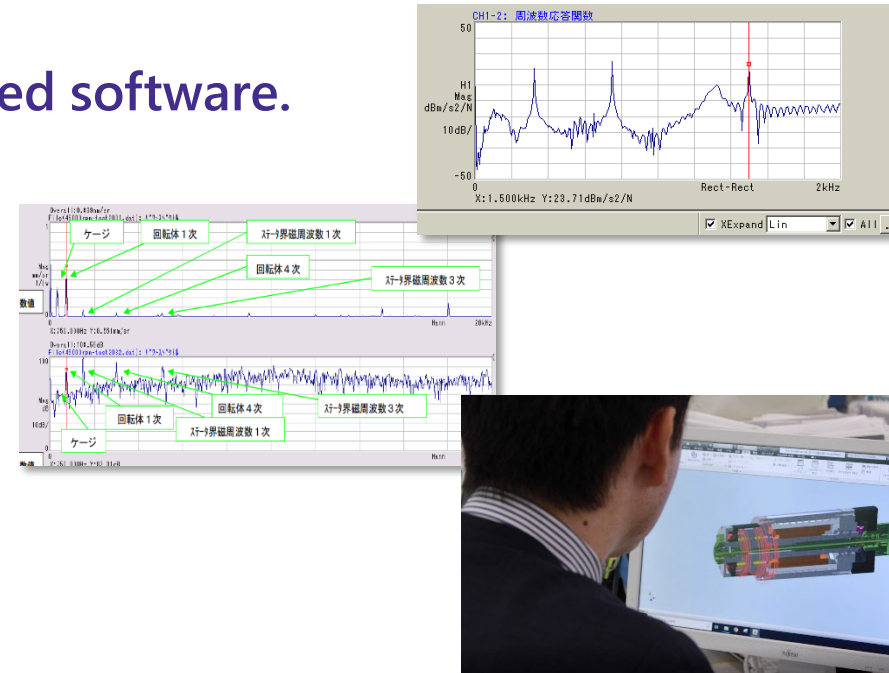
License agreement with Gewinde Ziegler (Switzerland).  
We started manufacturing under our own brand in 1985.

- ZM nut : Simultaneous polishing of end faces and screws
- FKN(A) nut : NC turning of end faces and screws

# Engineering for Sales Support

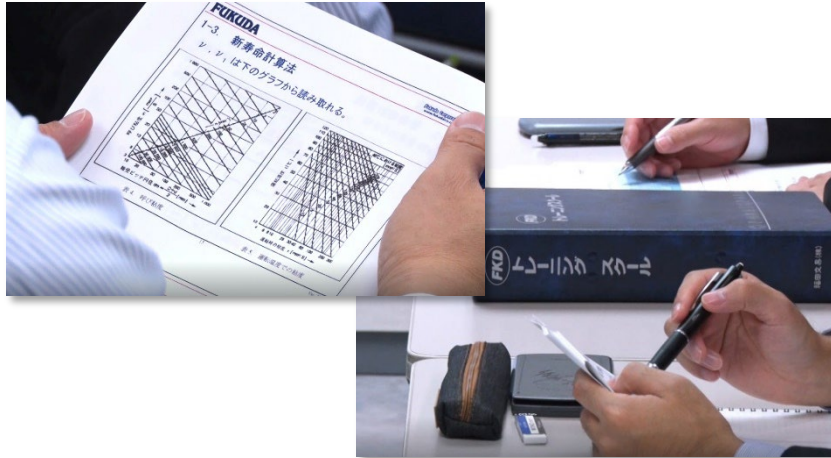
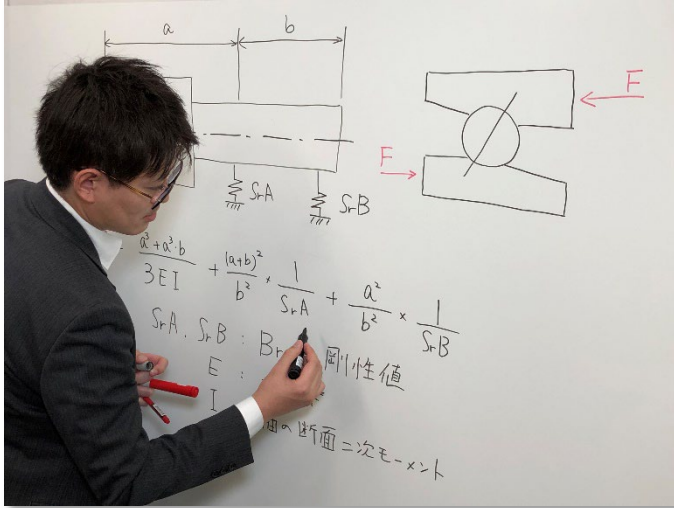
Although we are a trading company, we have sales engineers who have received technical training at overseas manufacturers, whom we call “product specialists.” Over a quarter of our employees are “product specialists.”

- ▶ Bearing technology calculation using dedicated software.
- ▶ Bearing inspections
- ▶ 3D CAD simulation
- ▶ Inverter control system design
- ▶ Vibration Analysis.
- ▶ Technical Seminars
- ▶ Spindle Technical Seminars





# Seminars for Machine Tool Design Engineers



## FKD Training School・FKD Online Seminar FKD Spindle Training School

- Summary:
  - ▶ This course is designed for machine tool design engineers to acquire a wide range of knowledge from the basics of bearings to their selection. Practical contents that can be applied to design work.
  - ▶ This seminar covers a wide range of spindle-related technologies and is useful for spindle design and selection of internal components.
- Participants: Machine tool design engineers with about 3 years of experience.

# Seminars for Machine Tool Design Engineers

YAMAZAKI MAZAK CORPORATION

TOYOTA MOTOR CORPORATION

NISSAN MOTOR CO., LTD.

Shin Nippon Koki Co., LTD.

Komatsu NTC Ltd.

NIDEC OKK CORPORATION

TOYO ADVANCED TECHNOLOGIES Co., LTD.

HONDA MOTOR CO., LTD.

AISIN Corporation

SHIGIYA MACHINERY WORKS LTD.

Mazda Motors Corporation

YASUNAGA CORPORATION

KANZAKI KOKYUKOKI MFG. CO., LTD.

MAKINO MILLING MACHINE CO., LTD.

TAIYO KOKI Co., Ltd.

Howa Machinery, Ltd.

THK Co., Ltd.

Amada Co., Ltd.

BIG DAISHOWA SEIKI CO., LTD.

YASDA PRECISION TOOLS K.K.



Started: 1992

Organized: 140 seminars (as of Dec. 2024)

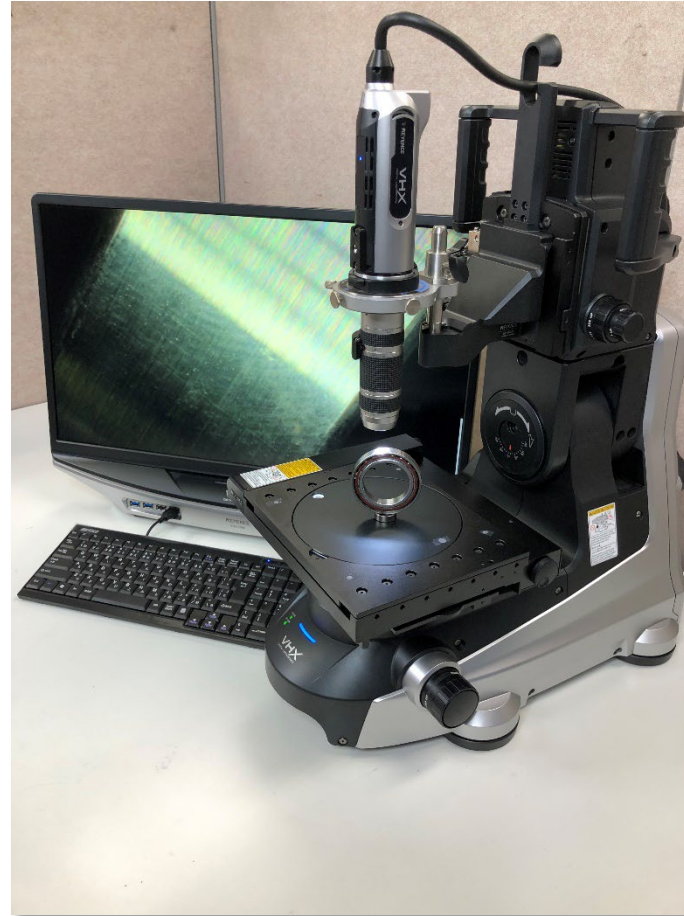
Grand Total: 2475 Engineers, 450 companies

# Damaged Bearing / Spindle Analysis For Customer Satisfaction

Customer service =

- Quicker response
- More precise advise

⇒ New Demands





# Technical Center

In July 2019, our new Technical Center was opened in Ebina, Kanagawa.  
It has an expanded working area for spindle overhauls, trial runs and machine shop.  
It is fully equipped with temperature-controlled inspection rooms for bearings, spindle components and spindle performance in dynamic behavior, and a soundproof room for acoustics noise measurement of spindles.

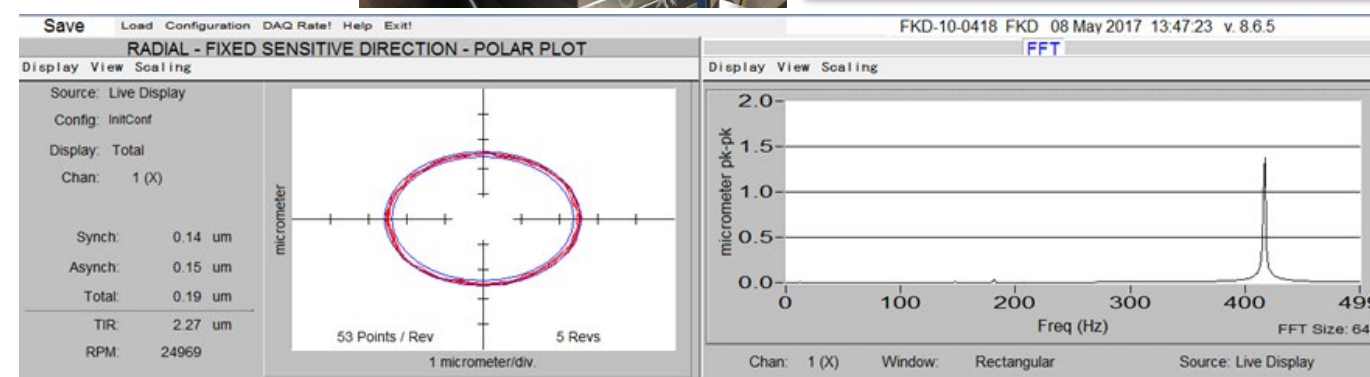
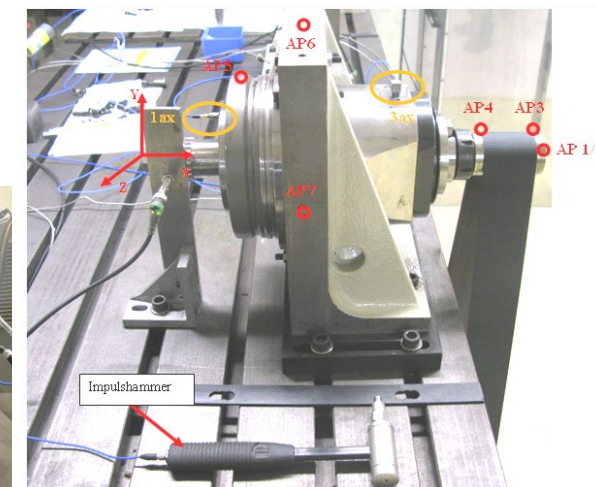
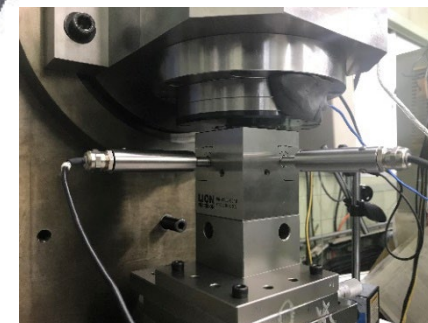
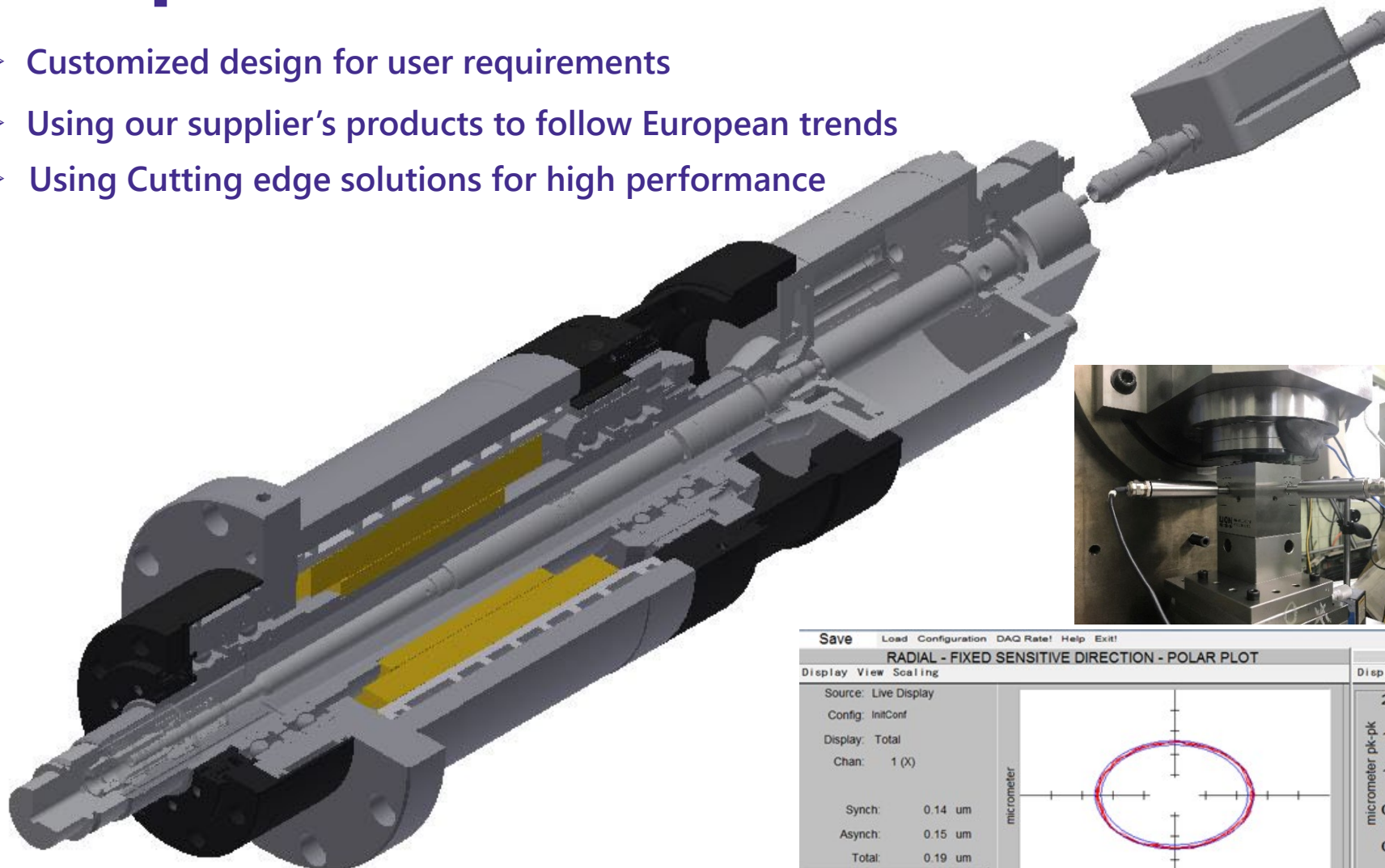


Site area: 3,000 m<sup>2</sup> Building area: 1,150 m<sup>2</sup> Total floor area: 1,660 m<sup>2</sup>

# FKD Spindle

**FUKUDA**  
よりよいものを世界から

- Customized design for user requirements
- Using our supplier's products to follow European trends
- Using Cutting edge solutions for high performance



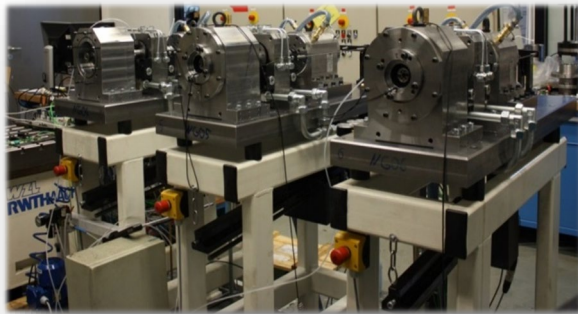


# Industry-University Collaboration

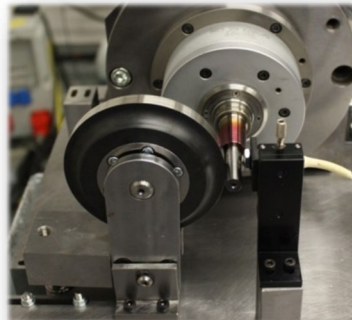
- Joint research with Aachen University of Technology WZL
- Technical exchanges with Darmstadt University of Technology PTW, and Fraunhofer Institute for Manufacturing Engineering and Automation IPA, and Fraunhofer Institute for Production Technology IPT
- We participate in The Japanese Society for Abrasive Technology, and the European Society for Precision Engineering, and also other associations and groups
- Joint research and study meetings with many Engineering Departments of several prominent Japanese Universities
- We host “FKD Innovation Days”, an international cutting-edge technology symposium for Machine Tool Technologies (see right picture below)



FKD Innovation Days



Source : WZL Aachen



Source : WZL Aachen





# 2<sup>nd</sup> FKD INNOVATION DAYS

- Date・Location: November 2019, 2 days. Shinagawa Prince Hotel Main Tower, Tokyo, Japan
- Guests: About 100 participants from leading Japanese and foreign machine tool manufacturers
- Main contents: 1) WZL keynote speeches and lectures by manufacturers  
2) Poster session

Topics & Speakers
「Improving Productivity in the Era of Industry 4.0」 Schaeffler / Dr. Martin Voll
「Turning data into Productivity」- keynote speech Prof. Dr. Christian Brecher / WZL RWTH Aachen
「Fit for IoT-Machine Tool Spindles evolving from Mechanical Component to Mechatronic System」 Dr. Bernd Moeller / GMN
「Condition Monitoring With RUCOLA」 Dr. Stefan Bonerz / OTT- JAKOB
「Active control of Unbalance and Acoustic Emissions for Touch Control in Grinding Spindles」 Dr. Andrea Guidotti / Balance Systems
「The challenges and opportunities of sensor based machining today and tomorrow」 Mr. Hubertus von Zastrow / pro-micron



# Sources of Information We are Providing

**FUKUDA**  
よりよいものを世界から



JIMTOF2024

## Website

 / **Fukuda Corporation**



- ▶ We participate in trade shows such as JIMTOF
- ▶ We conduct on site demonstrations at your company
- ▶ Our web-site provides our full company profile along with seven categories of products - with full technical data.

# Surpassing Competency in Purchasing



- Suppliers: More than 200 suppliers
- Number of countries: 15
- Breakdown: Germany, U.S.A., Italy, U.K., Sweden, Norway, Israel, etc.

## EUROPE

ABL	Dierickx-Tools	Lecureux
ATE	ERST	Lenord+Bauer
Balance Systems	Fey	LEVICRON
Barden UK	FRB	LUBCON
BEHA	GAMET	MARCEL
BIAX	GMN	Montronix
BILSING	GOETZE	MWM
AUTOMATION	GRW	Schmieranlagen
CEROBEAR	Hofmann	OTT-JAKOB
Colibri	HQW	PPE
COMPOTECH	HUTCHINSON	PEJO
Conoptica	Hyprostatik	PRECISE France
Cooper	JAKOB	pro-micron

## AMERICA

Barden USA	McGill
COPLEY	NEWWAY
EST	Parker/Trilogy
Fenner Drives	REGAL
Haydon Kerk / PITTMAN	RIMTEC
INPRO/SEAL	SKF
KAYDON	SLADE
MCT	TIMKEN



# Inventory Control

In August 2007, our New Inventory Control Center. Its aim is to improve the distribution service we provide to our customers.



The Inventory Control Center is state of the art including an earthquake absorbing structure. Our large and wide ranging inventory is stored in a temperature and humidity controlled center-24/7.

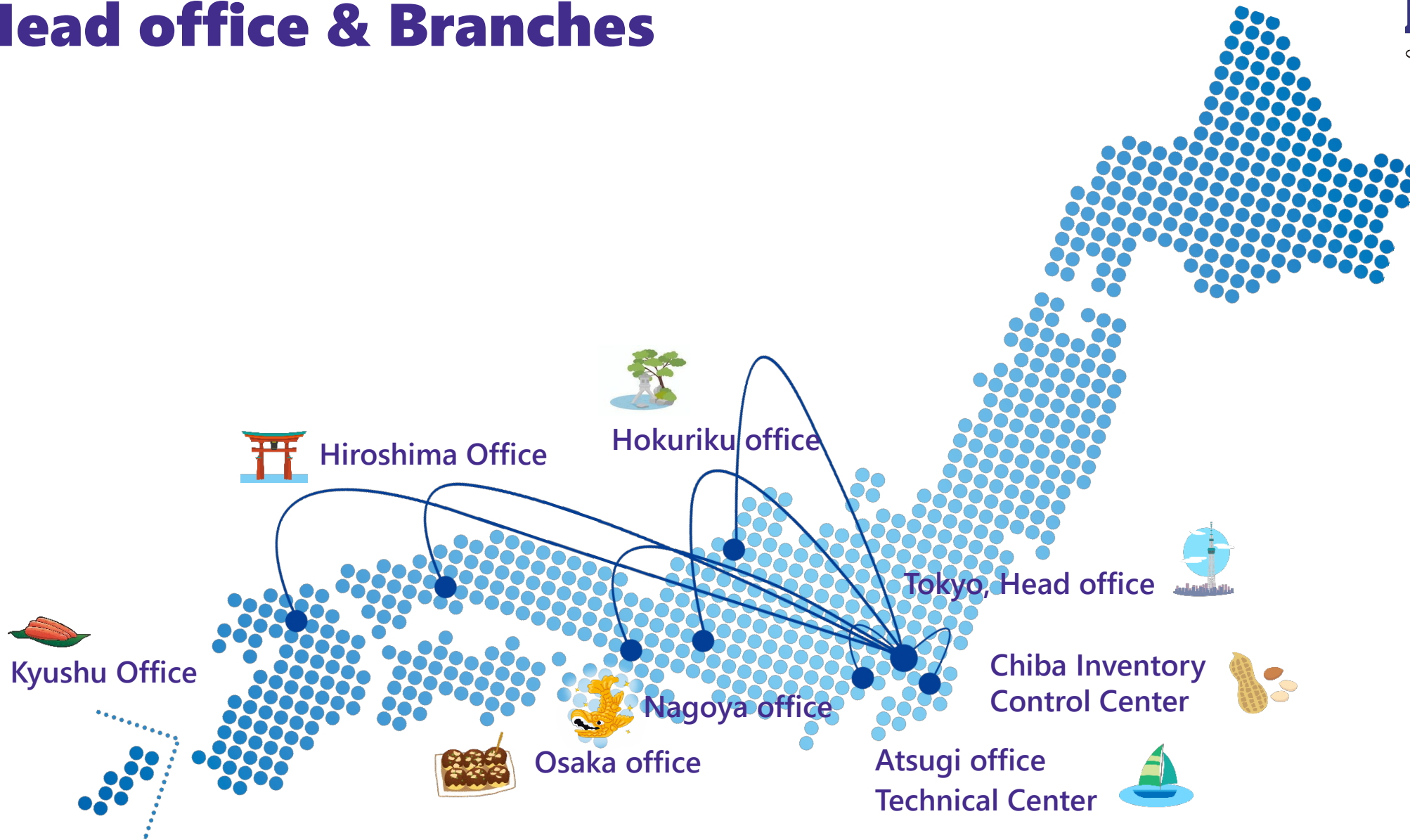
Location: Inage, Chiba city  
Very close to the North Chiba Interchange of the Higashi Kanto Expressway

Lot area 3,640m<sup>2</sup>, Floor space 3,880m<sup>2</sup>



# Head office & Branches

**FUKUDA**  
よりよいものを世界から



# Organization



Jan. 2025



**FUKUDA**  
[www.fukudaco.co.jp](http://www.fukudaco.co.jp)

