

FUKUDA

福田交易株式會社

Company Profile 2026



History

FUKUDA
May the Future be with you



1950-The company resumed operations as, R. Fukuda & Company Ltd., Imports of bearings and cutting tools became an important area of its business activities.

1950' s

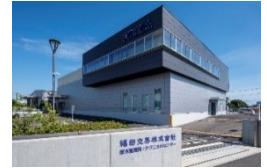


We stopped handling automobile parts in 1977. At that time, import parts business increased to 86%.

1970' s

Atsugi and Kyushu branch offices opened. The company was renamed Fukuda Corporation. Our Business shifted from MRO to OEM.

1990' s



Atsugi Branch Office and Atsugi Factory moved to Ebina. Atsugi Factory renamed as Technical Center. We celebrated our 70th Anniversary in 2019.

2010' s

1940' s

1940-Rakuo Fukuda (1904-1981) founded his trading company in Tokyo. The Company specialized in imports of bearings, machine tools, automobile and aircraft parts. We closed our company in 1941, due to World War II.

1960' s

Nagoya and Osaka branch offices opened to increase precision bearings for machine tool, electrical machinery parts and automobile parts. At that time, industrial import parts made up 44% of our sales, while automobile parts were 56% of our sales.

1980' s

Hiroshima and Hokuriku branch offices opened. Inventory control center was established in Urayasu. Atsugi factory was opened to manufacture precision lock nuts. Engineering department established to start technical services.

2000' s

Inventory control center moved to Chiba. ISO 9001 and ISO 14001 acquired.

Business Concept

FUKUDA
May the Future be with you

**We are an import Firm specializing
in machine Technology**

Superior Products from All Parts of the World

We are introducing and offering to the Japanese machine industry unique and exceptional accessory parts and equipment for machinery - produced in Europe and North America.



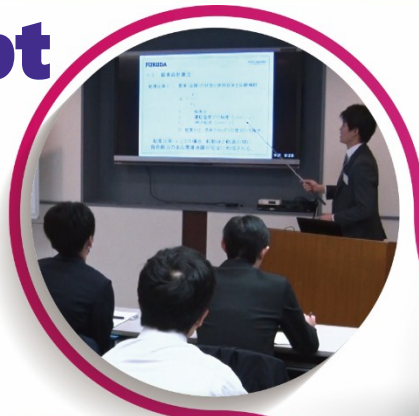
Source:WZL



Business Concept

FUKUDA
May the Future be with you

Training School
for Design Engineers



Consulting
Specialists



Technical Service

We offer more than just
products...

Diagnosing •
Testing •
Troubleshooting



Technical Seminars
& Presentations



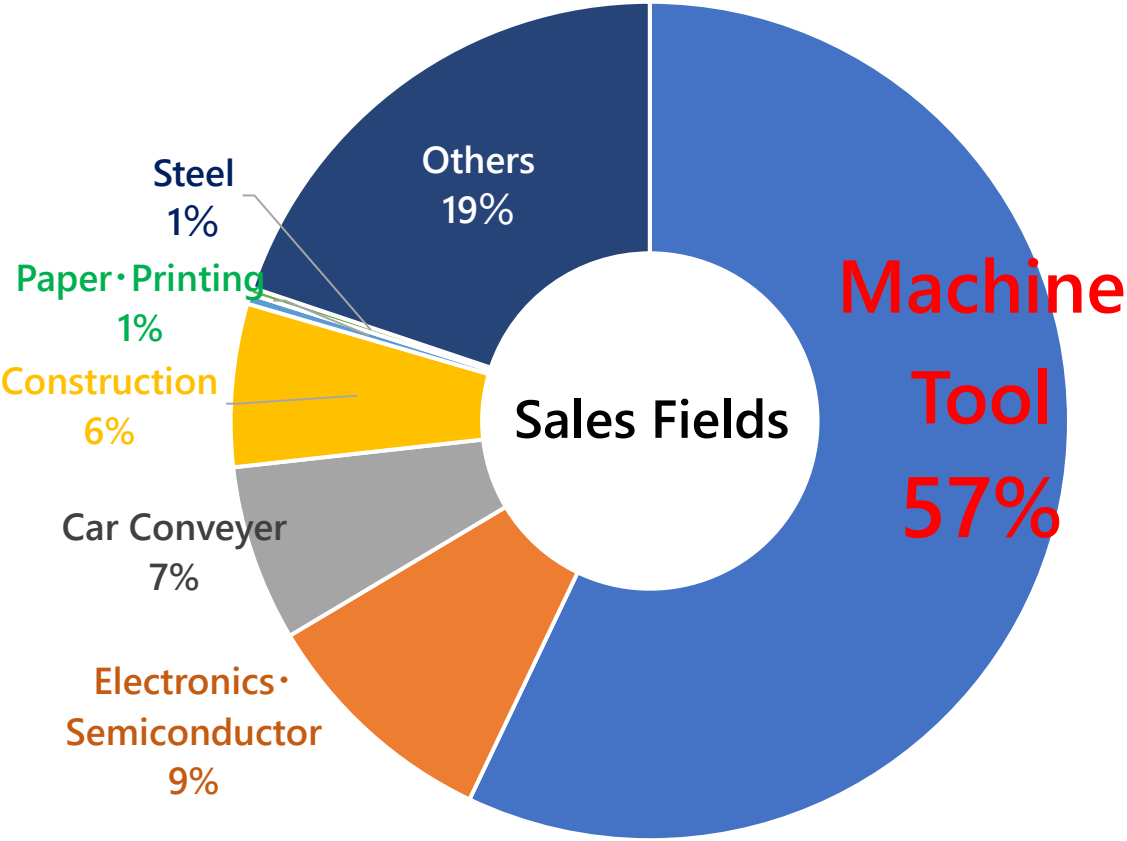
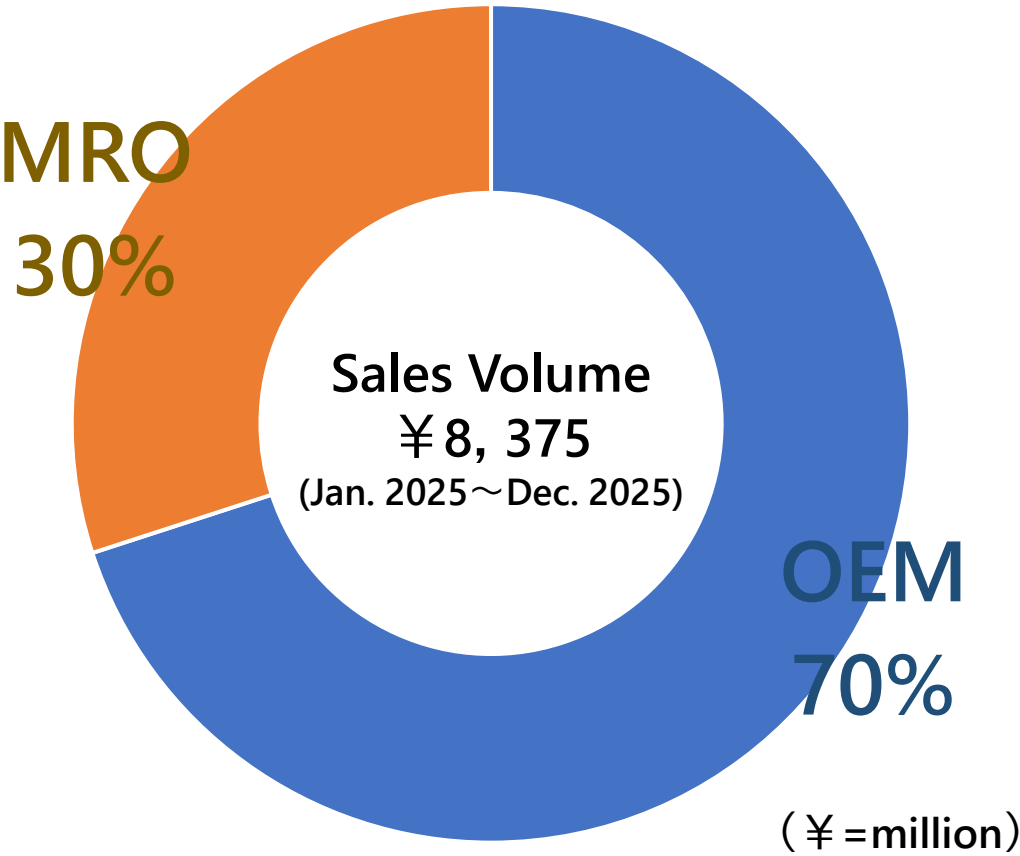
Technical Center
Production & Repair
of Machine
Tool Spindles



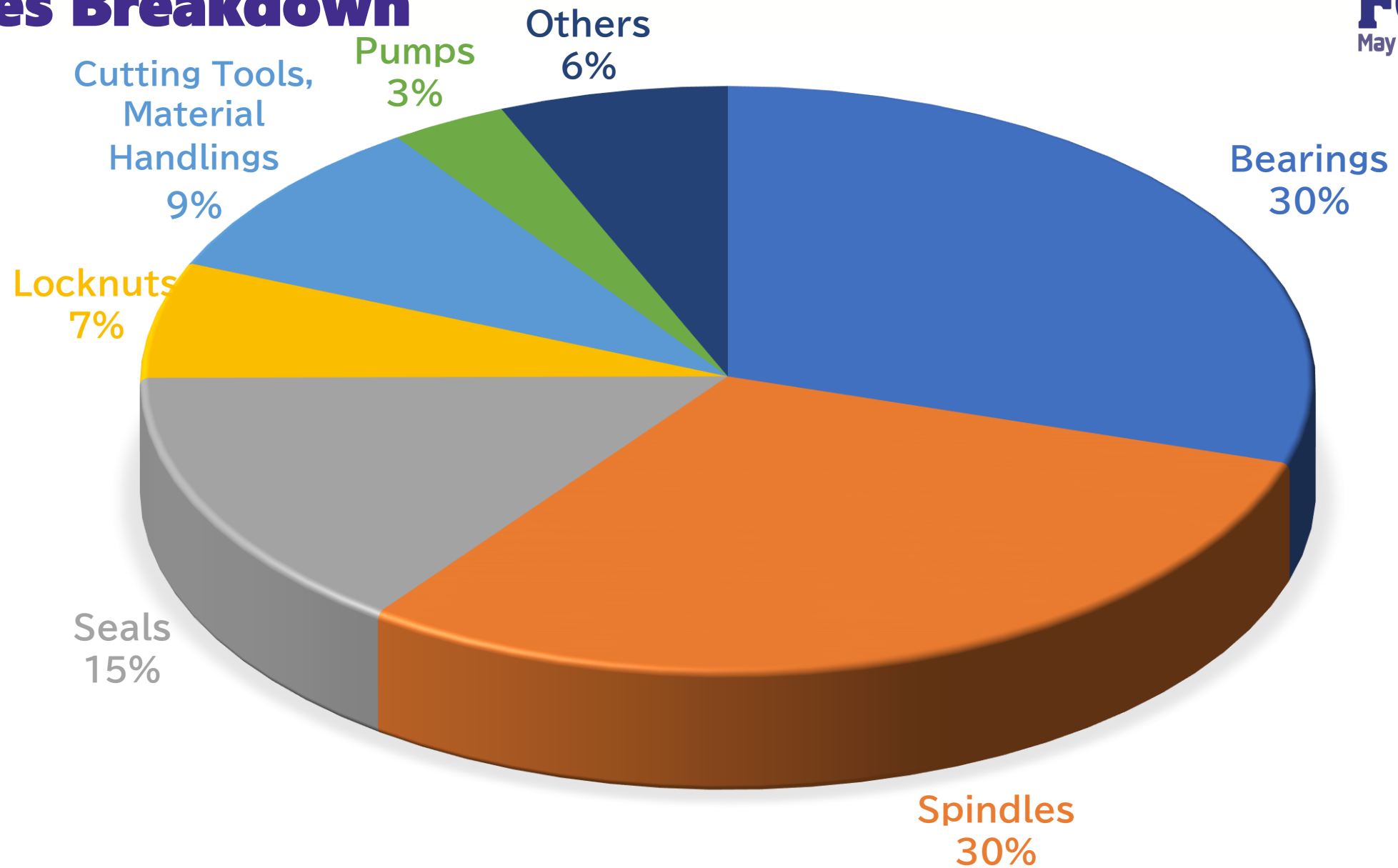
Providing Technical
Data and Information



FUKUDA's Business Fields



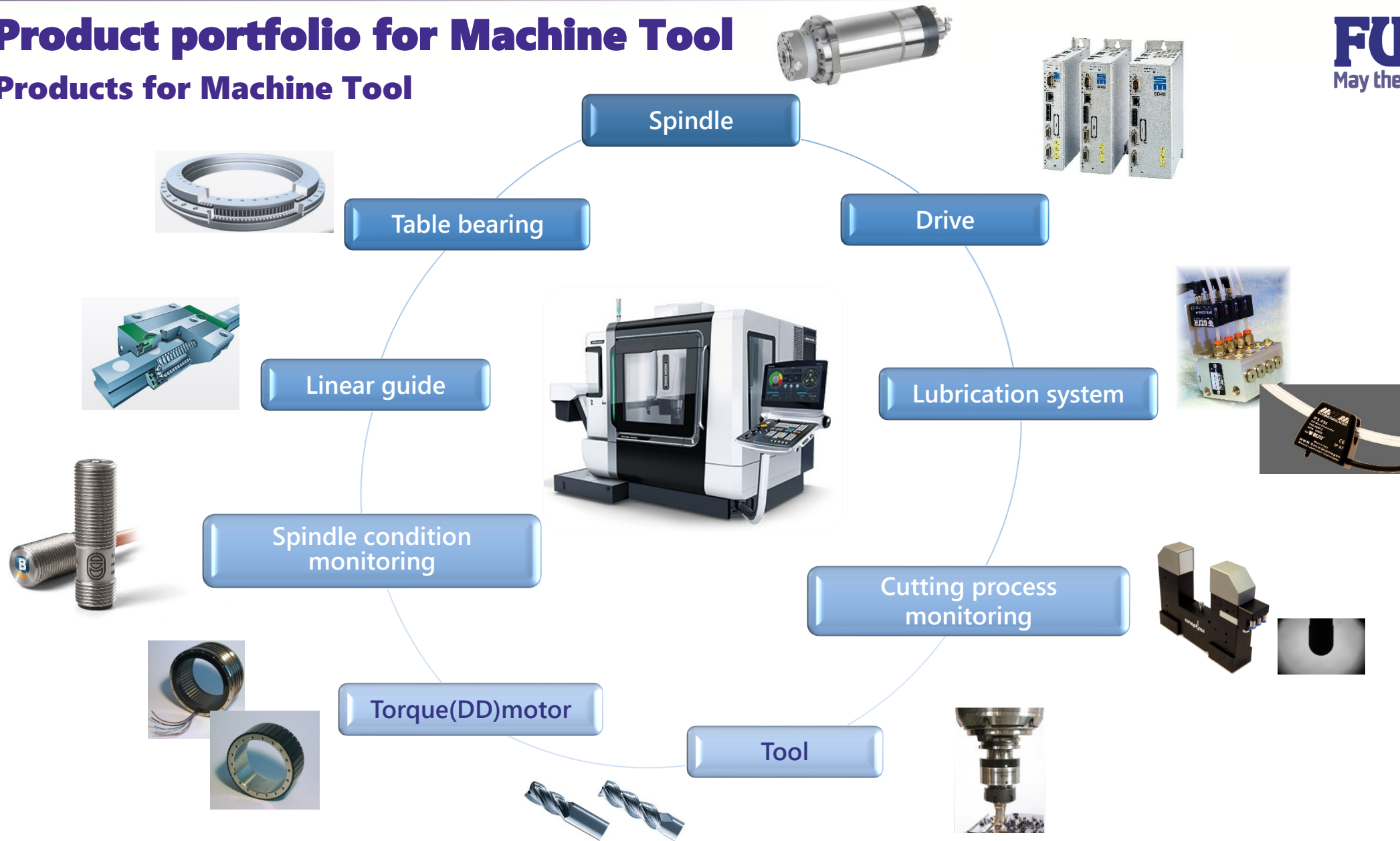
Sales Breakdown



Product portfolio for Machine Tool

Products for Machine Tool

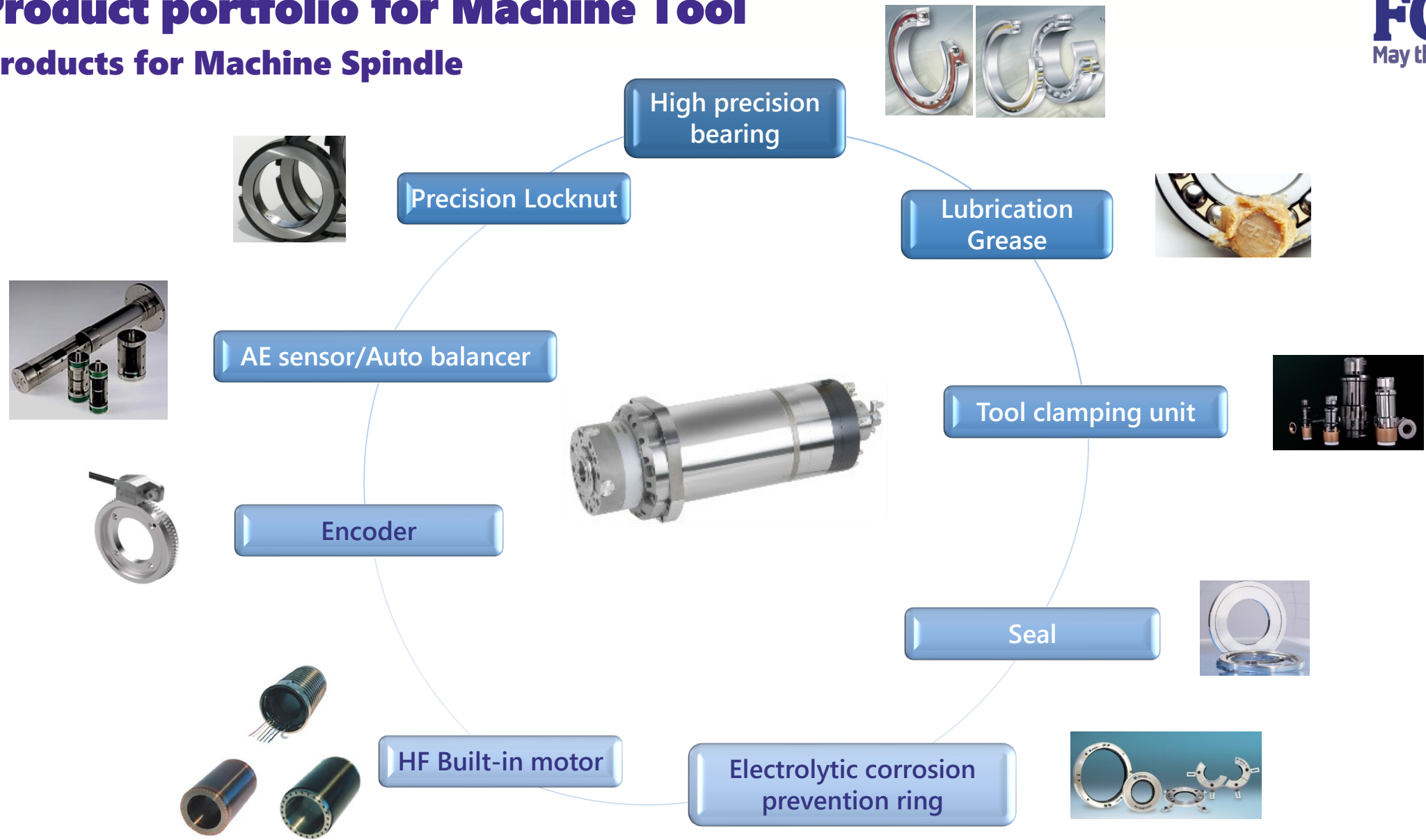
FUKUDA
May the Future be with you



Product portfolio for Machine Tool

Products for Machine Spindle

FUKUDA
May the Future be with you

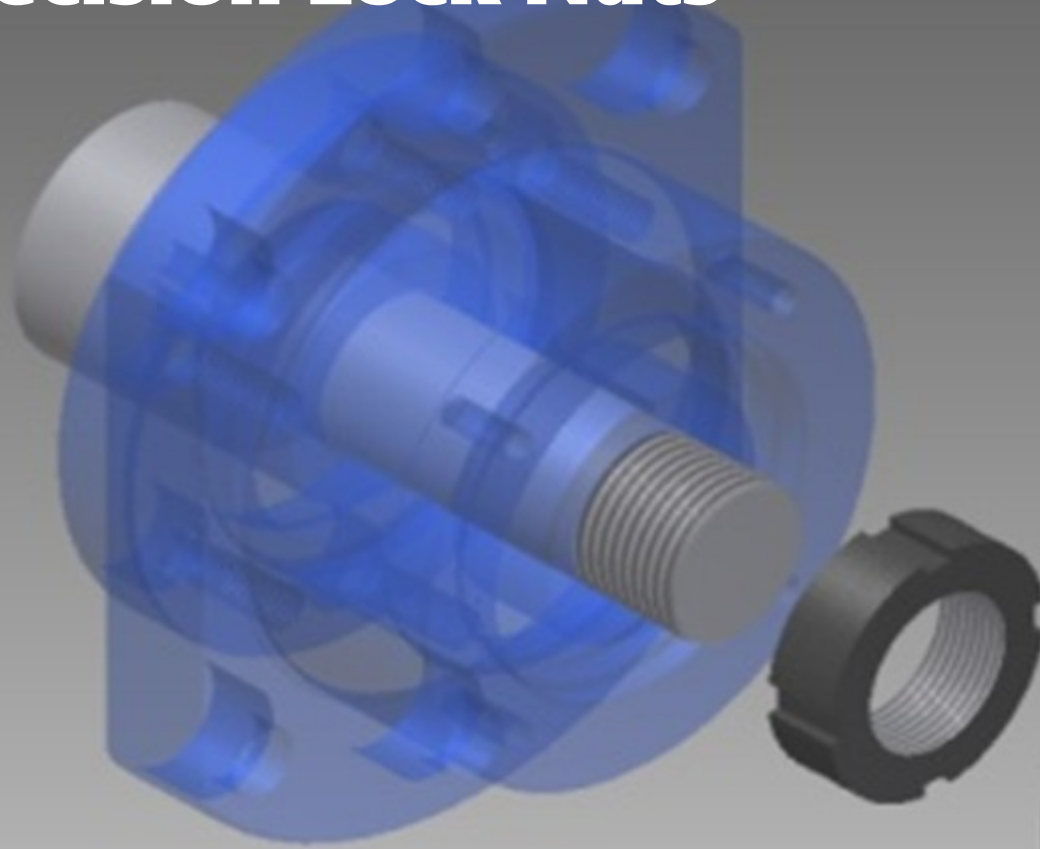


Main Customers



AISIN Corporation	JFE Steel Corporation	NACHI-FUJIKOSHI CORP.	THK Co., Ltd.
Amada Co., Ltd.	JTEKT CORPORATION	Nagase Integrex Co., Ltd.	TMEIC Corporation
BRIDGESTONE CORPORATION	Kashiyama Industries, Ltd.	NIDEC MACHINE TOOL CORPORATION	TOKYO SEIMITSU CO., LTD.
CITIZEN MACHINERY CO., LTD.	Kawasaki Heavy Industries, Ltd.	NIKON CORPORATION	Toray Engineering Co., Ltd.
DENSO CORPORATION	KUBOTA Corporation	NISSAN MOTOR CO., LTD.	TOYO ADVANCED TECHNOLOGIES Co., LTD.
DMG Mori Seiki Co., Ltd.	Kobe Steel, Ltd.	Okuma Co., Ltd.	TOYO KANETSU K.K.
EBARA CORPORATION	Komatsu NTC Ltd.	Okamoto Machine Tool Works, Ltd.	TOYOTA MOTOR CORPORATION
FANUC LTD	MAKINO MILLING MACHINE CO., LTD.	ROKU-ROKU SMART TECHNOLOGY CO., LTD.	TSUDAKOMA Corp.
FUJI CORPORATION	Mazda Motors Corporation	SCREEN Holding Co., Ltd.	TSUGAMI CORPORATION
Hitachi, Ltd.	MICRON MACHINERY CO., LTD.	SHIBAURA MACHINE CO., LTD.	Union Tool Co.
HONDA MOTOR CO., LTD.	MITSUI SEIKI KOGYO CO., LTD.	SHIMADZU PRECISION TECHNOLOGY, Ltd.	WAIDA MFG. CO., LTD.
HORKOS CORP	Mitsubishi Motors Corporation	Shin Nippon Koki Co., Ltd.	YAMAZAKI MAZAK CORPORATION
IHI Corporation	MITSUBISHI HEAVY INDUSTRIES, LTD.	SUBARU CORPORATION	YASDA PRECISION TOOLS K.K.
ISUZU Motors LIMITED	Mitsubishi Electric Corporation	Sumitomo Heavy Industries, Ltd.	YANMAR HOLDINGS CO., LTD.
JAXA	MITSUBISHI MATERIALS CORPORATION	TAIYO KOKI Co., Ltd.	Zeon Corporation

FKD Precision Lock Nuts



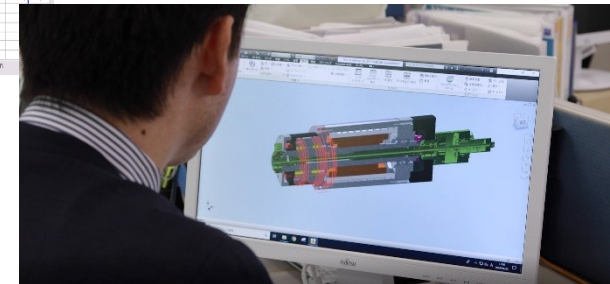
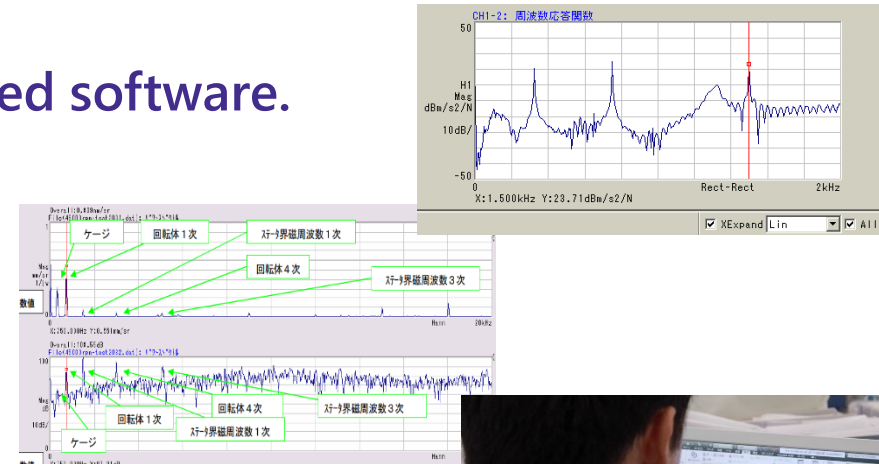
License agreement with Gewinde Ziegler (Switzerland).
We started manufacturing under our own brand in 1985.

- ZM nut : Simultaneous polishing of end faces and screws
- FKN(A) nut : NC turning of end faces and screws

Engineering for Sales Support

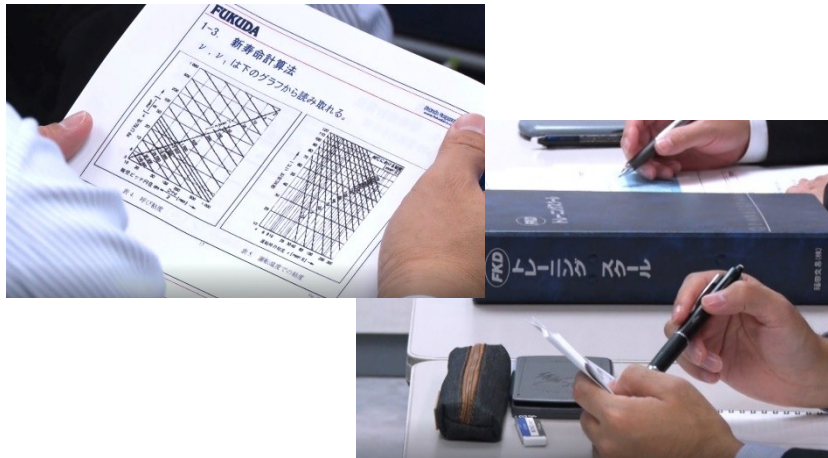
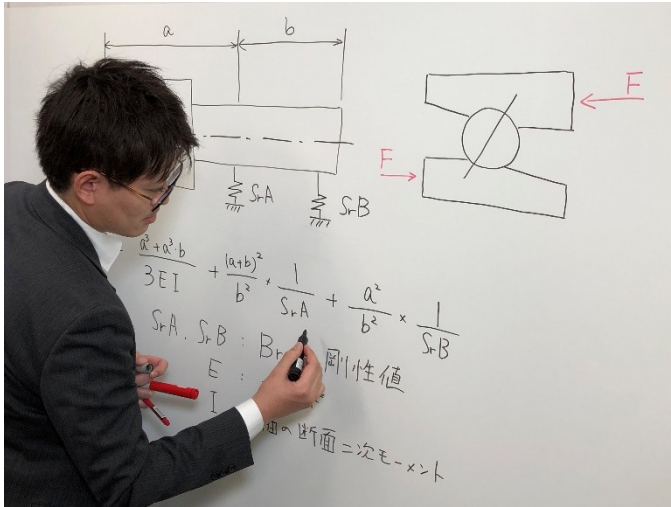
Although we are a trading company, we have sales engineers who have received technical training at overseas manufacturers, whom we call “product specialists.” Over a quarter of our employees are “product specialists.”

- ▶ Bearing technology calculation using dedicated software.
- ▶ Bearing inspections
- ▶ 3D CAD simulation
- ▶ Inverter control system design
- ▶ Vibration Analysis.
- ▶ Technical Seminars
- ▶ Spindle Technical Seminars



Seminars for Machine Tool Design Engineers

FUKUDA
May the Future be with you



FKD Training School・FKD Online Seminar FKD Spindle Training School

- Summary:
 - ▶ This course is designed for machine tool design engineers to acquire a wide range of knowledge from the basics of bearings to their selection. Practical contents that can be applied to design work.
 - ▶ This seminar covers a wide range of spindle-related technologies and is useful for spindle design and selection of internal components.
- Participants: Machine tool design engineers with about 3 years of experience.

Seminars for Machine Tool Design Engineers

YAMAZAKI MAZAK CORPORATION

TOYOTA MOTOR CORPORATION

NISSAN MOTOR CO., LTD.

Shin Nippon Koki Co., LTD.

Komatsu NTC Ltd.

NIDEC OKK CORPORATION

TOYO ADVANCED TECHNOLOGIES Co., LTD.

HONDA MOTOR CO., LTD.

AISIN Corporation

SHIGIYA MACHINERY WORKS LTD.

Mazda Motors Corporation

YASUNAGA CORPORATION

KANZAKI KOKYUKOKI MFG. CO., LTD.

MAKINO MILLING MACHINE CO., LTD.

TAIYO KOKI Co., Ltd.

Howa Machinery, Ltd.

THK Co., Ltd.

Amada Co., Ltd.

BIG DAISHOWA SEIKI CO., LTD.

YASDA PRECISION TOOLS K.K.



Started: 1992

Organized: 145 seminars (as of Dec. 2025)

Grand Total: 2597 Engineers, 450 companies

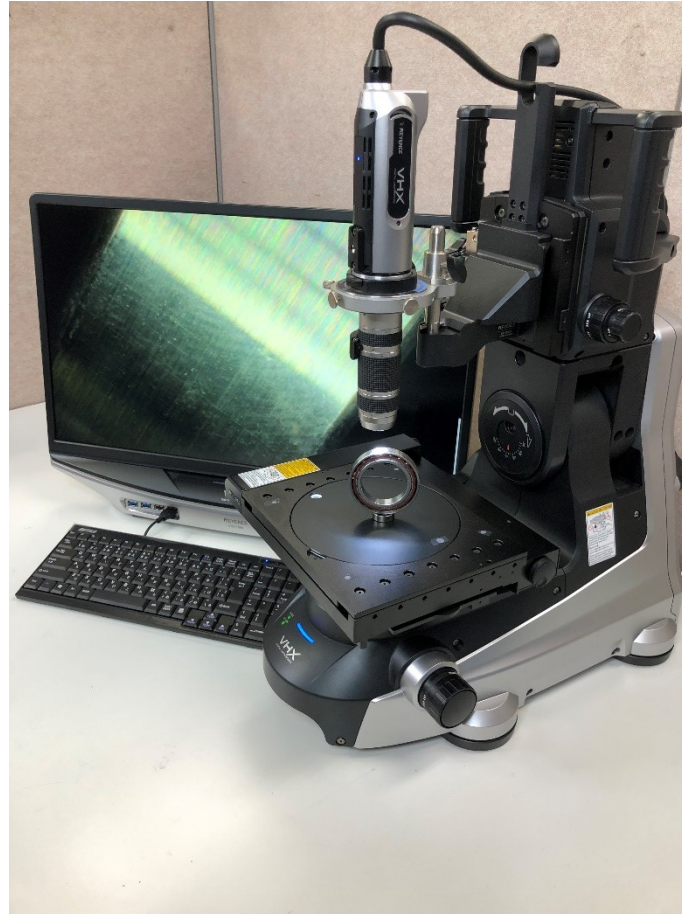
Damaged Bearing / Spindle Analysis For Customer Satisfaction

FUKUDA
May the Future be with you

Customer service =

- Quicker response
- More precise advise

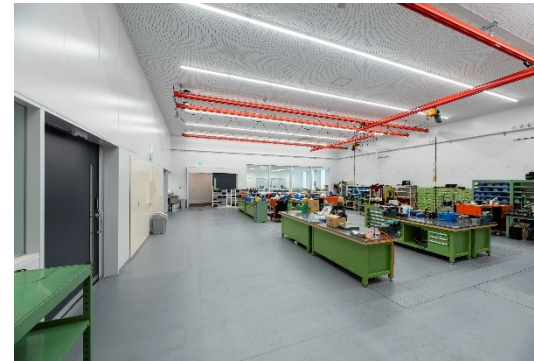
⇒ New Demands



Technical Center

FUKUDA
May the Future be with you

In July 2019, our new Technical Center was opened in Ebina, Kanagawa. It has an expanded working area for spindle overhauls, trial runs and machine shop. It is fully equipped with temperature-controlled inspection rooms for bearings, spindle components and spindle performance in dynamic behavior, and a soundproof room for acoustics noise measurement of spindles.



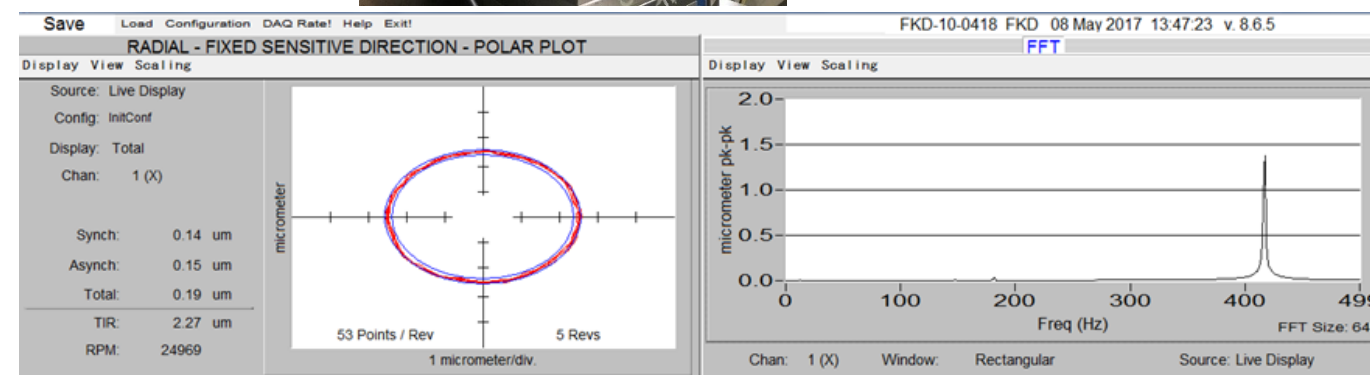
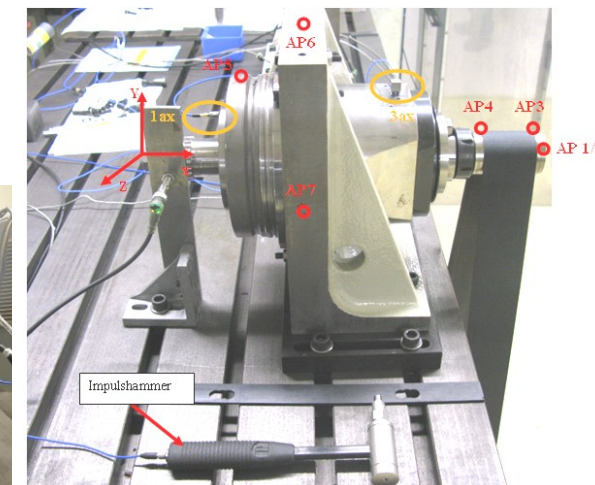
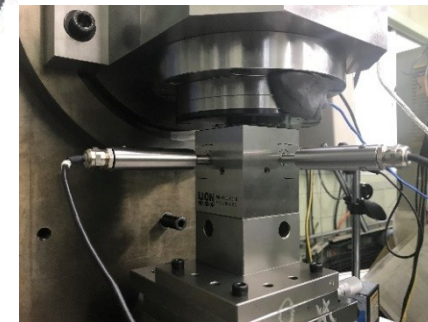
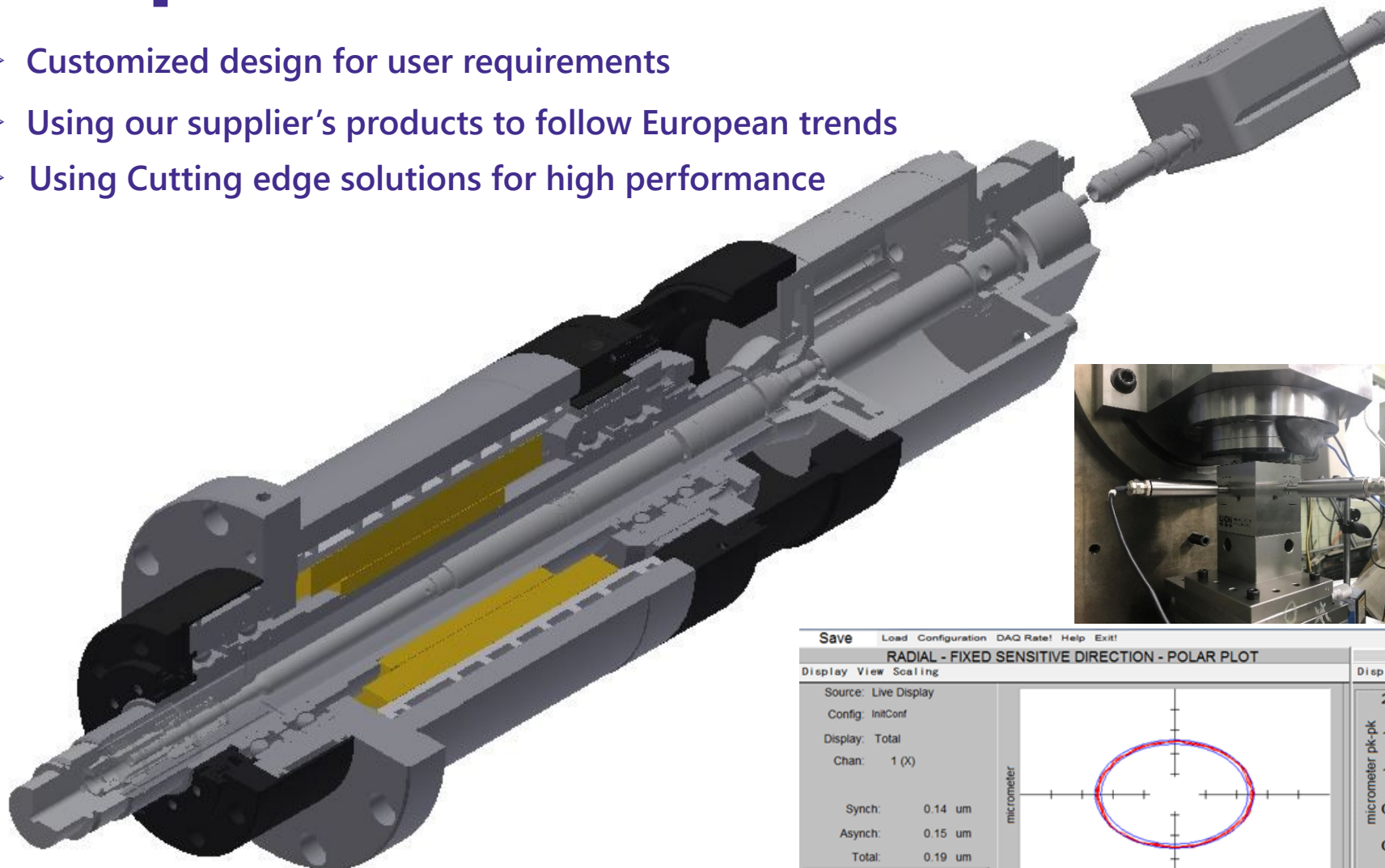
Site area : 3,000 m² Building area : 1,150 m² Total floor area : 1,660 m²

福田交易株式会社
Fukuda Corporation

FKD Spindle

FUKUDA
May the Future be with you

- Customized design for user requirements
- Using our supplier's products to follow European trends
- Using Cutting edge solutions for high performance

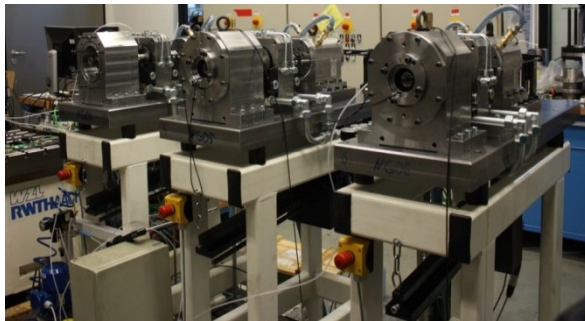


Industry-University Collaboration

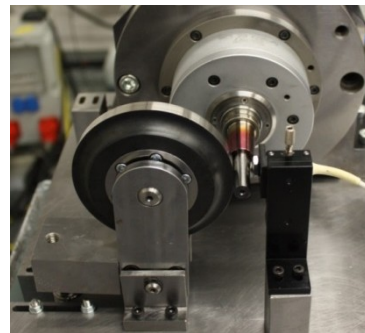
- Joint research with Aachen University of Technology WZL
- Technical exchanges with Darmstadt University of Technology PTW, and Fraunhofer Institute for Manufacturing Engineering and Automation IPA, and Fraunhofer Institute for Production Technology IPT
- We participate in The Japanese Society for Abrasive Technology, and the European Society for Precision Engineering, and also other associations and groups
- Joint research and study meetings with many Engineering Departments of several prominent Japanese Universities
- We host “FKD Innovation Days”, an international cutting-edge technology symposium for Machine Tool Technologies (see right picture below)



FKD Innovation Days



Source : WZL Aachen



Source : WZL Aachen



2nd FKD INNOVATION DAYS

- Date • Location : November 2019, 2 days. Shinagawa Prince Hotel Main Tower, Tokyo, Japan
- Guests : About 100 participants from leading Japanese and foreign machine tool manufacturers
- Main contents :
 - 1) WZL keynote speeches and lectures by manufacturers
 - 2) Poster session

Topics & Speakers
「Improving Productivity in the Era of Industry 4.0」 Schaeffler / Dr. Martin Voll
「Turning data into Productivity」 - keynote speech Prof. Dr. Christian Brecher / WZL RWTH Aachen
「Fit for IoT-Machine Tool Spindles evolving from Mechanical Component to Mechatronic System」 Dr. Bernd Moeller / GMN
「Condition Monitoring With RUCOLA」 Dr. Stefan Bonerz / OTT- JAKOB
「Active control of Unbalance and Acoustic Emissions for Touch Control in Grinding Spindles」 Dr. Andrea Guidotti / Balance Systems
「The challenges and opportunities of sensor based machining today and tomorrow」 Mr. Hubertus von Zastrow / pro-micron



Sources of Information We are Providing



JIMTOF2024

Website

 / **Fukuda Corporation**



- ▶ We participate in trade shows such as JIMTOF
- ▶ We conduct on site demonstrations at your company
- ▶ Website Renewal in 2025
- ▶ Enhanced visibility through AI-powered search and infographics

Surpassing Competency in Purchasing

FUKUDA
May the Future be with you



- Suppliers: More than 200 suppliers
- Number of countries: 15
- Breakdown: Germany, U.S.A., Italy, U.K., Sweden, Norway, Israel, etc.

EUROPE

ABL	Fey	Lenord+Bauer
ATE	FRB	LEVICRON
Balance Systems	GAMET	LUBCON
Barden UK	GMN	MARCEL
BEHA	GOETZE	Montronix
BIAX	GRW	MWM
Bilsing Automation	GZ	Schmieranlagen
CEROBEAR	Hofmann	OTT-JAKOB
Colibri	HQW	PPE
COMPOTECH	HUTCHINSON	PEJO
Conoptica	Hyprostatik	PRECISE France
Cooper	JAKOB	pro-micron
ERST	Lecureux	

AMERICA

Barden USA	McGill
COPLEY	NEWWAY
EST	Parker/Trilogy
Fenner Drives	REGAL
Haydon Kerk / PITTMAN	Rexnord
INPRO/SEAL	RIMTEC
KAYDON	Sealmaster
MCT	SKF
	SLADE
	TIMKEN

Inventory Control

FUKUDA
May the Future be with you

In August 2007, our New Inventory Control Center. Its aim is to improve the distribution service we provide to our customers.



Location: Inage, Chiba city
Very close to the North Chiba Interchange
of the Higashi Kanto Expressway

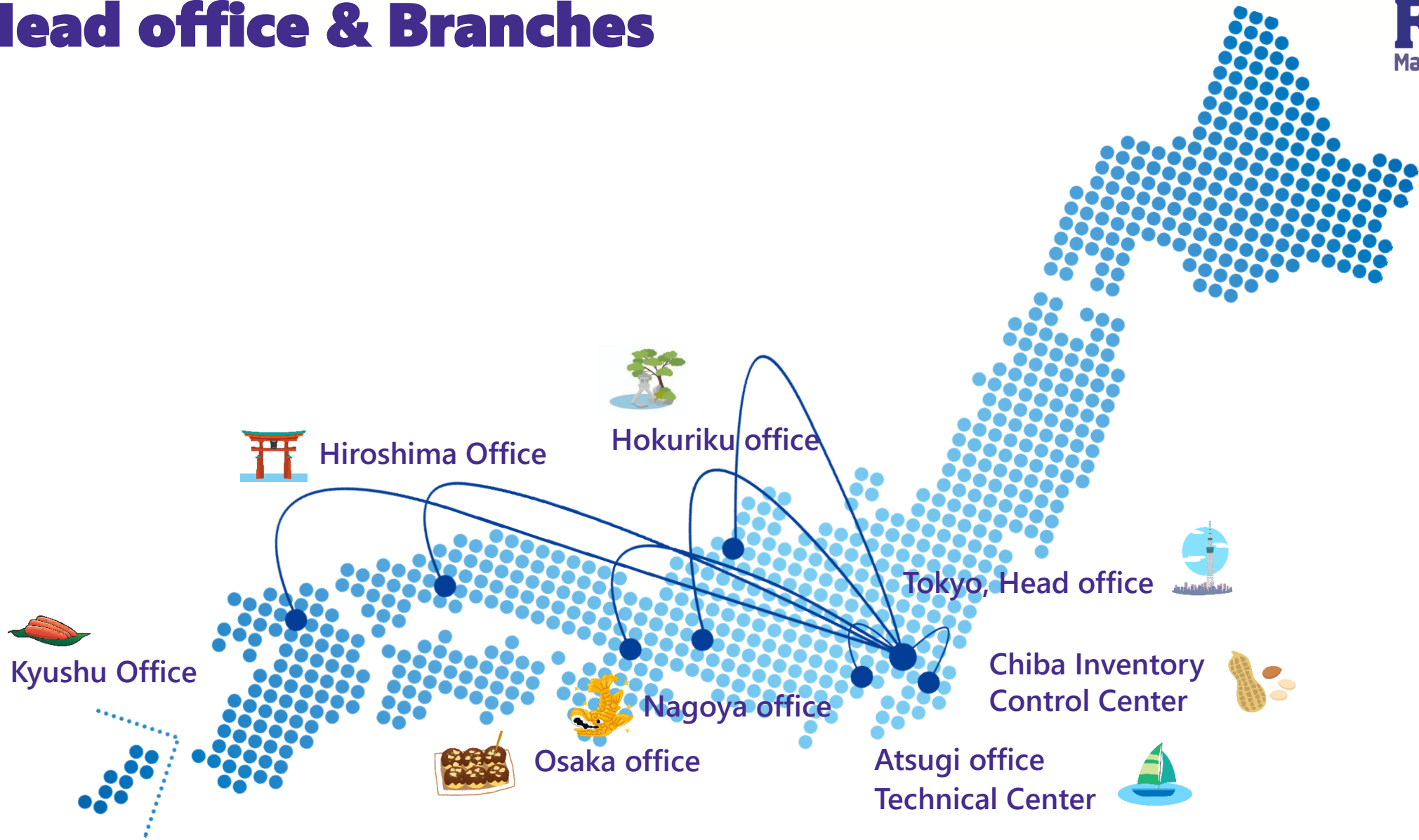
Lot area 3,640m², Floor space 3,880m²

The Inventory Control Center is state of the art including an earthquake absorbing structure.
Our large and wide ranging inventory is stored in a temperature and humidity controlled center-24/7.

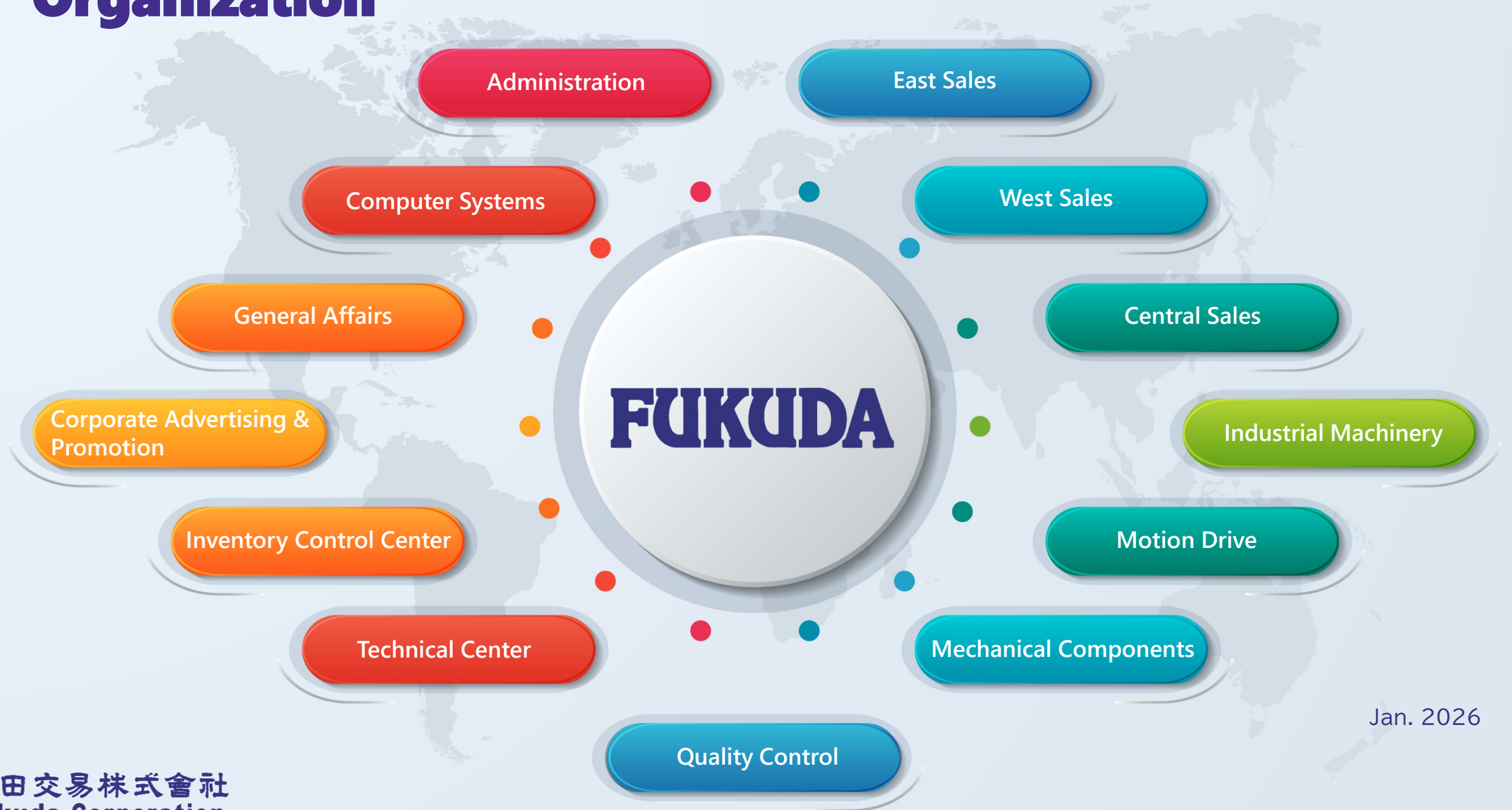


Head office & Branches

FUKUDA
May the Future be with you



Organization



Jan. 2026

FUKUDA
www.fukudaco.co.jp

