



CONVEYXONIC®

APPLICATIONS

For Very Light loads:

Hutchinson proposes a **Conveyxonic® PH belt**.

For Light loads: Conveyxonic® PJ

► **Multi-level conveyors:** Efficient use at an angle of **10% maximum**.

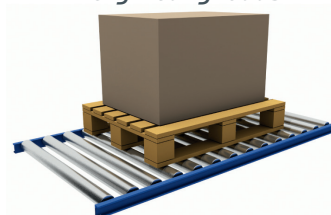
► **Accumulation:** Accumulation rollers with grooved profiles are now available for use with the **Conveyxonic®**.

For Very Heavy loads:

Hutchinson offers a **Conveyxonic® PK belt** to replace chains for very heavy loads up to 2 tonnes (89mm roller diameter, 80mm ribbed pulley diameter).



Very Heavy loads



As a partner and designer of solutions, we can help you meet your design parameters: line transfers, sorters, very light load conveyors, special geometries, etc.

Ask for our «Conveyor and handling systems» market leaflet to discover the Hutchinson solutions and in a wide range of applications. Don't hesitate to contact us to discuss your conveyor needs!

CONVEYXONIC® WIZARD - QUICK SELECTION GUIDE

The **Conveyxonic® Wizard** Hutchinson is a **free, simple and quick** selection guide for your **Conveyxonic®**.

- You **choose the type of roller conveyor** (straight or curved).
- You **enter the load** to be transported and the desired flow speed.

→ The Wizard then recommends the **Conveyxonic® belt best suited** to your needs.

► Available on **Download on the App Store**

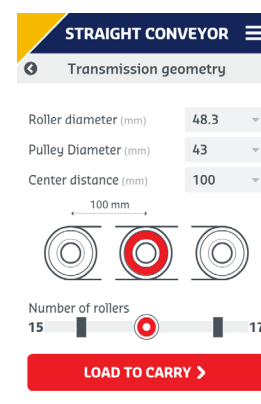
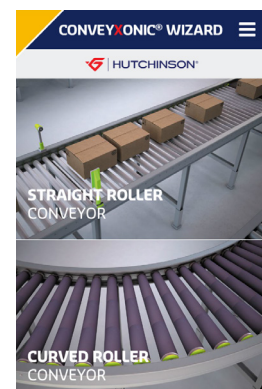


Available on the **Google play**



► Desktop version available on hutchinsontransmission.com

► To discover our other solutions dedicated to conveying systems, **ask for our conveying market leaflet!**



CONTACTS

HUTCHINSON DISTRIBUTOR



HUTCHINSON®

HUTCHINSON BELT DRIVE SYSTEMS
Rue des Martyrs – BP 423 – 37304 Joué-lès-Tours Cedex – France
Tél. : +33 (0)2 47 48 39 99 / belt.drives@hutchinson.com
www.hutchinsontransmission.com

March 2018, non contractual-document. Hutchinson reserves the right to modify all or part of this documentation without prior warning. Design: www.letb-synergie.com & Hutchinson BDS.



CONVEYXONIC®

THE BELT REVOLUTION IN ROLLER CONVEYORS

We make it **possible**



The Conveyxonic® is an elastic power transmission belt, with multiple longitudinal ribs, dedicated to roller conveyor use. It is the **only belt technology** capable of transporting parcels weighing from 1kg to 2 tonnes.

- Cost savings
- Technical performance
- Customer confidence



EXPERTISE

Hutchinson, a rubber specialist since 1853, is the inventor of conveyor elastic belt technology.

We are working with the **worldwide market leaders** of Roller Conveyors and **millions of Conveyxonic®** belts are fitted on thousands of conveyor kilometers.

Our **technical teams** are working **in close collaboration** with the **experts of the conveyor market**, to constantly improve our product capabilities.

STRUCTURE

The polyamide elastic cord of the Conveyxonic® has outstanding mechanical properties. It can withstand temperatures of **more than 80°C**.

Hutchinson has developed a «Cold Resistant» rubber compound capable of **meeting the requirements of the Food Industry** (cold room storage).



Cold resistant to -30°C



Temperature up to 80°C

CHARACTERISTICS

The elasticity of the **Conveyxonic®** allows it to absorb shocks, unlike chains or synchronous belts. **Conveyxonic®** belts are **antistatic**. They comply with **ISO 1813**.

Conveyor cleaning:	Water	Alcohol	PH > 10	High-pressure washing	Corrosion
Resistance Conveyxonic®	★★★★	★★★	★★★	★★★★	★★★★

POWER RANGE

Two profiles to cover a power range from 55 to 550W and 0.10m/s to 3m/s.

The **Conveyxonic® PJ «Light loads»** easily outperforms round polyurethane belts, with its transmission ratio 4-times higher.

The **Conveyxonic® PJ «Medium and Heavy loads»** can replace a chain drive system.

BELT PROFIL	Diameters	Loads	No. of ribs
PJ Light loads	50mm Roller 43mm Ribbed pulley	1 to 200kg	2
		201 to 300kg	3
		301 to 400kg	4
PJ Medium & Heavy loads	60,5mm Roller 56mm Ribbed pulley	400Kg ... 1 200kg	6 ... 8
	63mm Roller 60mm Ribbed pulley		

Specific values to be adapted to the conveyor's configuration.



HUTCHINSON®



CONVEYXONIC®

€ COST SAVINGS

Electricity:

The efficiency of the **Conveyxonic®** reduces the motor's **electrical consumption**.

Stock:

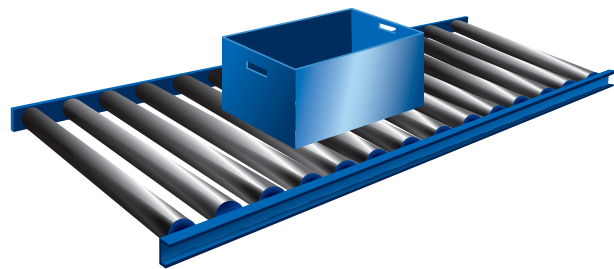
Only one technology to stock.

In the case of light loads and depending on the weight of the load being transported, you change the number of ribs on the belt but always retain the same roller.

Our complete range of **Conveyxonic®** belts is **readily available** from all our distributors.

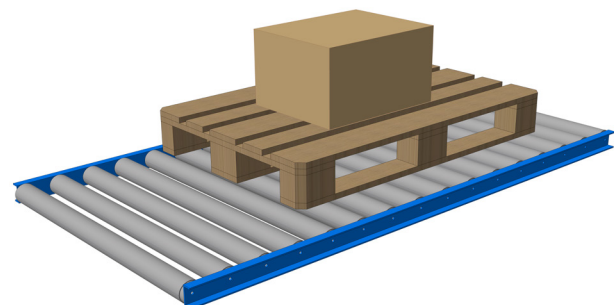
Low purchase cost: Immediate savings.

Light Loads

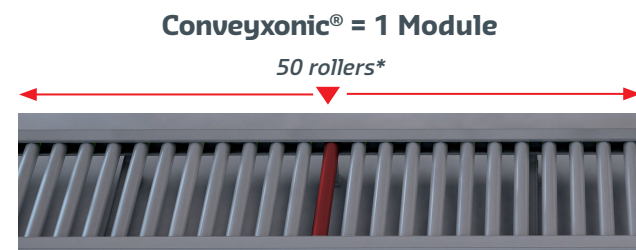
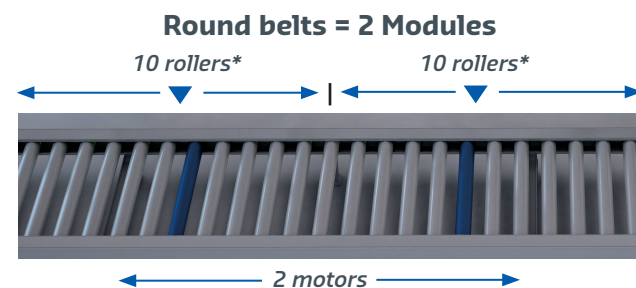


The **Conveyxonic®** belt's exceptional mechanical properties mean that a **single motor** is able to power up to a **maximum of 50 rollers**. Generating a **saving** of at least **30%** on each module.

Medium & Heavy Loads

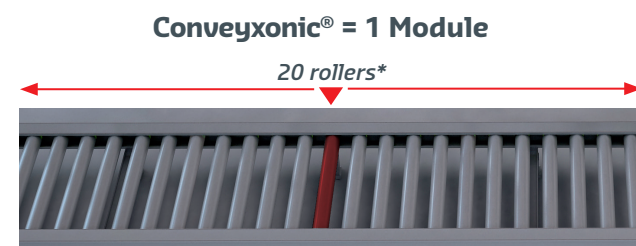


With a **Conveyxonic® belt**, a single motor is needed to run a maximum of **20 rollers**.



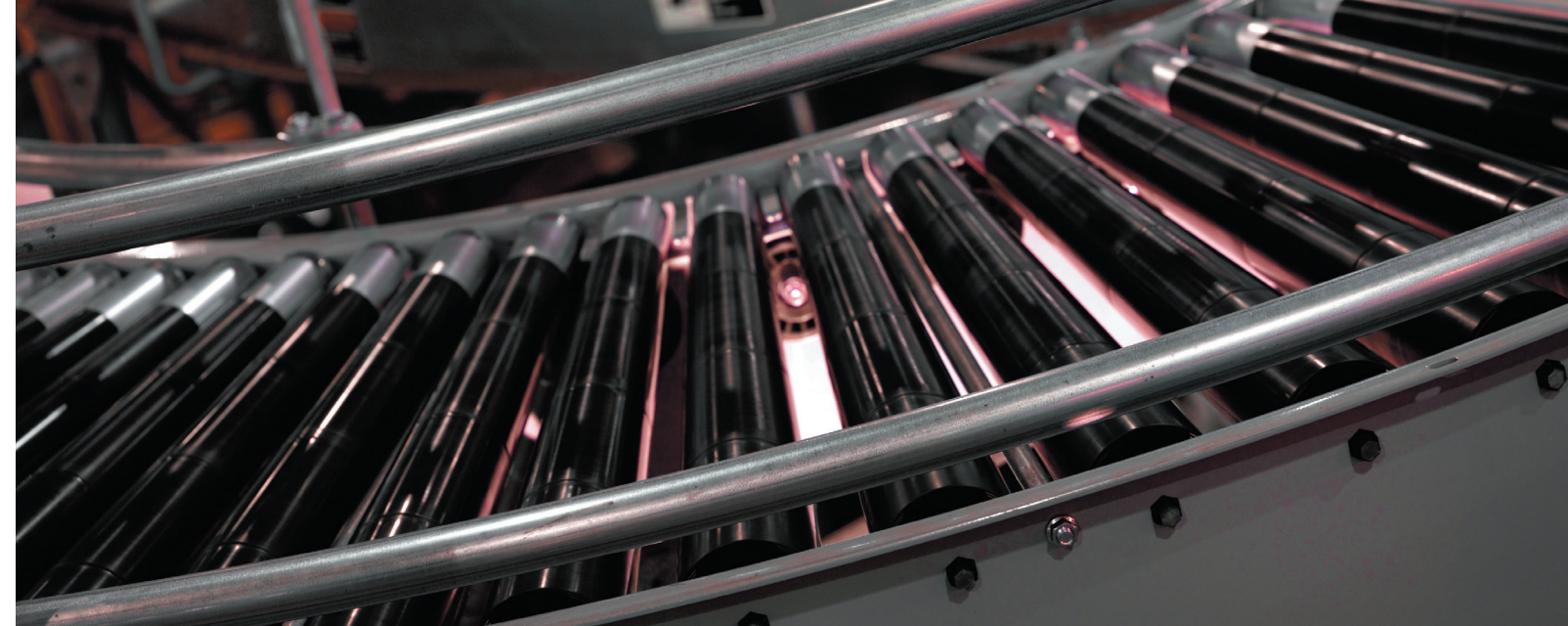
Just 1 motor

* 50mm diameter rollers for a 43mm pulley
Power: 55W – Speed: 100rpm – Load: 50kg
Indicative values



Just 1 motor

*60,5mm diameter rollers for a 56mm pulley
Power: 85W – Speed: 100rpm – Load: 400kg
Indicative values

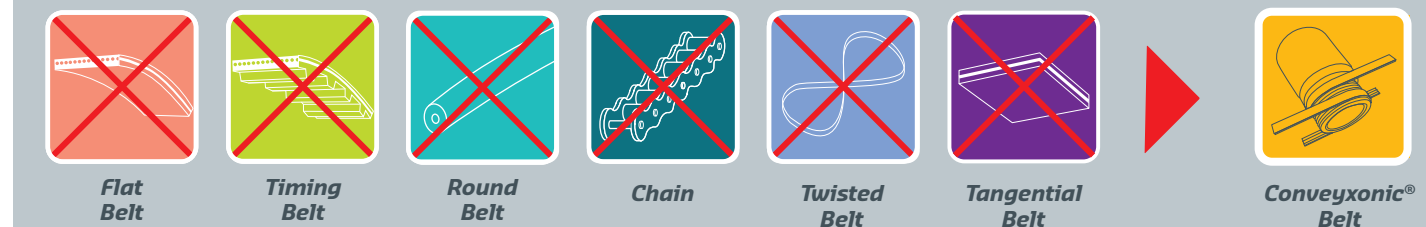


TECHNICAL PERFORMANCE

The **Conveyxonic®** is the « **6-in-1** » belt for transporting loads **from 1kg to 2 tonnes**, and thus replaces the six technologies used in the conveyor system (flat belt, round belt, timing belt, twisted belt, tangential and chain belt).

Increased speed:

The **Conveyxonic®** belt pushes the speed limits for parcel transport (up to 3m/s for the PJ profile). It can be adapted to suit all linear speeds, making for **smooth transport**.



CUSTOMER CONFIDENCE

Clean:

The **Conveyxonic®** belt does **not need any special maintenance**.

No maintenance, no greasing, so the conveyor **stays clean**. There is nowhere for dust to accumulate.

The grooved profile of the **Conveyxonic®** drains off water, which keeps the belts dry.

Reliability:

After a quick trial run, the tension of The **Conveyxonic®** remains the same, for the entire life of the belt, thereby making maintenance unnecessary.

Silence:

Thanks to the **elastic properties** of its side guides, the **Conveyxonic®** prevents the belt jumping and **reduces irritating noise** by absorbing shocks, vibrations and flapping.

The grooves in the **Conveyxonic®** make the **transmission very silent**, whatever speed the conveyor is operating at.

Yield:

No more chain stops: the **Conveyxonic®** can now operate non-stop 24/7 in complete silence.

Safety:

A number of safety features are available on the market to meet the requirements of your conveyor. Please contact us for more information.